

M

ROUGH WEEKEND SPECIMEN

GARAGEFONTS.COM

# Rough Weekend

---

Light

*Light Italic*

Regular

*Italic*

**Bold**

***Bold Italic***

EXHORTING

AMAZEMENT

QUARTERLY

EXCHANGED

THYRISTOR

FIREPROOF

LOGISTICS

DISGRACES

**SUPPORTED**

FANCIABLE

**DESCRIBED**

**STRESSFUL**

Misdeeds

Purplish

**Signings**

Banishes

Giggling

**Squealer**

*Excepted*

*Fanciest*

***Exploder***

*Piracies*

*Codename*

***Barrages***

From the beginning of the systematic study of the heavens, the fact has been recognized that the form of the Milky Way denotes the scheme of the sidereal system. At first it was thought that the shape of the system was that of a vast round disk, flat like a cheese, and filled with stars, our sun and his relatively few neighbors being placed near the center. According to this view, the galactic belt was an effect of perspective: for when looking in the direction of the plane of the disk, the eye ranged through an immense extension of stars which blended into a glimmering blur, surrounding us like a ring: while when looking out from the sides of the disk we saw but few stars, and in those directions the heavens appeared relatively blank. Finally it was recognized that this theory did not correspond with the observed appearances, and it became evident that the Milky Way was not a mere effect of perspective, but an actual band of enormously distant stars, forming a circle about the sphere, the central opening of the ring (containing many scattered stars)

From the beginning of the systematic study of the heavens, the fact has been recognized that the form of the Milky Way denotes the scheme of the sidereal system. At first it was thought that the shape of the system was that of a vast round disk, flat like a cheese, and filled with stars, our sun and his relatively few neighbors being placed near the center. According to this view, the galactic belt was an effect of perspective; for when looking in the direction of the plane of the disk, the eye ranged through an immense extension of stars which blended into a glimmering blur, surrounding us like a ring; while when looking out from the sides of the disk we saw but few stars, and in those directions the heavens appeared relatively blank. Finally it was recognized that this theory did not correspond with the observed appearances, and it became evident that the Milky Way was not a mere effect of perspective, but an actual band of enormously distant stars, forming a circle about the sphere, the central opening of the ring (containing many scattered stars)



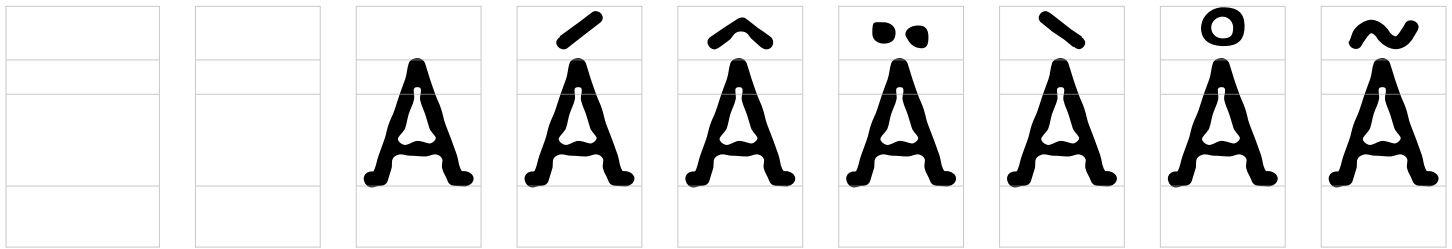
From the beginning of the systematic study of the heavens, the fact has been recognized that the form of the Milky Way denotes the scheme of the sidereal system. At first it was thought that the shape of the system was that of a vast round disk, flat like a cheese, and filled with stars, our sun and his relatively few neighbors being placed near the center. According to this view, the galactic belt was an effect of perspective; for when looking in the direction of the plane of the disk, the eye ranged through an immense extension of stars which blended into a glimmering blur, surrounding us like a ring; while when looking out from the sides of the disk we saw but few stars, and in those directions the heavens appeared relatively blank. Finally it was recognized that this theory did not correspond with the observed appearances, and it became evident that the Milky Way was not a mere effect of perspective, but an actual band of enormously distant stars, forming a circle about the sphere, the central opening of the ring (containing many scattered stars)

*From the beginning of the systematic study of the heavens, the fact has been recognized that the form of the Milky Way denotes the scheme of the sidereal system. At first it was thought that the shape of the system was that of a vast round disk, flat like a cheese, and filled with stars, our sun and his relatively few neighbors being placed near the center. According to this view, the galactic belt was an effect of perspective; for when looking in the direction of the plane of the disk, the eye ranged through an immense extension of stars which blended into a glimmering blur, surrounding us like a ring; while when looking out from the sides of the disk we saw but few stars, and in those directions the heavens appeared relatively blank. Finally it was recognized that this theory did not correspond with the observed appearances, and it became evident that the Milky Way was not a mere effect of perspective, but an actual band of enormously distant stars, forming a circle about the sphere, the central opening of the ring (containing many scattered stars)*

From the beginning of the systematic study of the heavens, the fact has been recognized that the form of the Milky Way denotes the scheme of the sidereal system. At first it was thought that the shape of the system was that of a vast round disk, flat like a cheese, and filled with stars, our sun and his relatively few neighbors being placed near the center. According to this view, the galactic belt was an effect of perspective; for when looking in the direction of the plane of the disk, the eye ranged through an immense extension of stars which blended into a glimmering blur, surrounding us like a ring; while when looking out from the sides of the disk we saw but few stars, and in those directions the heavens appeared relatively blank. Finally it was recognized that this theory did not correspond with the observed appearances, and it became evident that the Milky Way was not a mere effect of perspective, but an actual band of enormously distant stars, forming a circle about the sphere, the central opening of the ring (containing many scattered stars)

*From the beginning of the systematic study of the heavens, the fact has been recognized that the form of the Milky Way denotes the scheme of the sidereal system. At first it was thought that the shape of the system was that of a vast round disk, flat like a cheese, and filled with stars, our sun and his relatively few neighbors being placed near the center. According to this view, the galactic belt was an effect of perspective; for when looking in the direction of the plane of the disk, the eye ranged through an immense extension of stars which blended into a glimmering blur, surrounding us like a ring; while when looking out from the sides of the disk we saw but few stars, and in those directions the heavens appeared relatively blank. Finally it was recognized that this theory did not correspond with the observed appearances, and it became evident that the Milky Way was not a mere effect of perspective, but an actual band of enormously distant stars, forming a circle about the sphere, the central opening of the ring (containing many scattered stars)*

72pt



.notdef

space

A

Acute

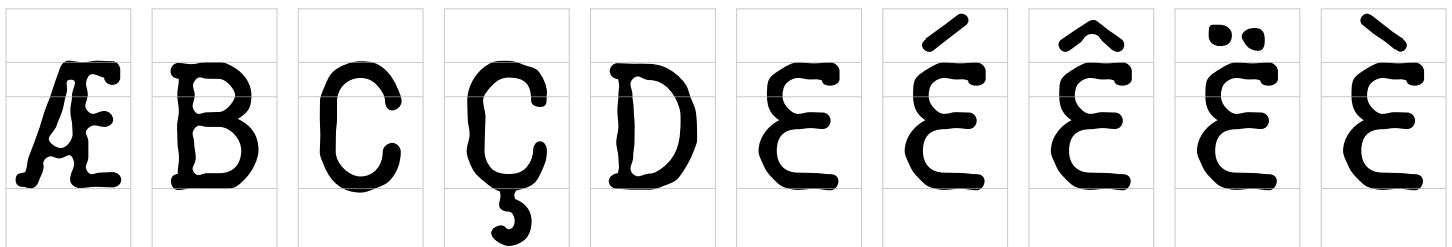
Acircumflex

Adieresis

Agrave

Aring

Atilde



Æ

B

C

Ccedilla

D

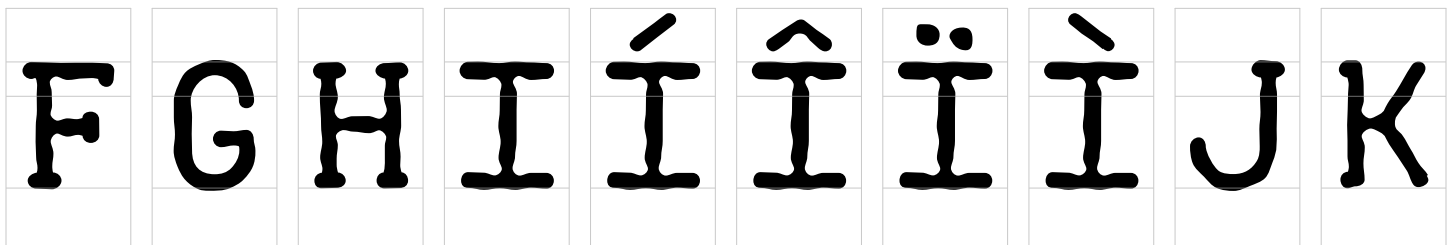
E

Eacute

Ecircumflex

Edieresis

Egrave



F

G

H

I

Iacute

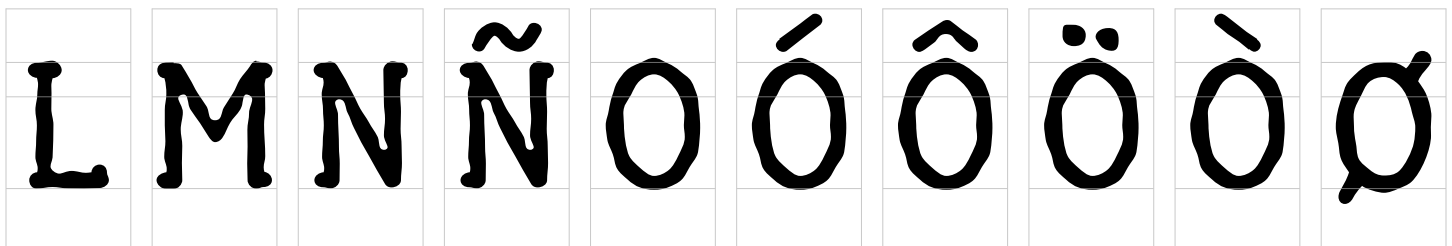
Icircumflex

Idieresis

Igrave

J

K



L

M

N

Ntilde

O

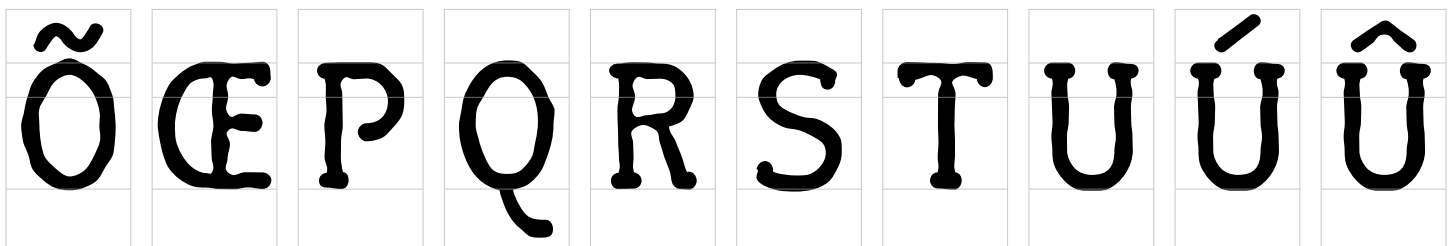
Oacute

Ocircumflex

Odieresis

Ograve

Oslash



Otilde

OE

P

Q

R

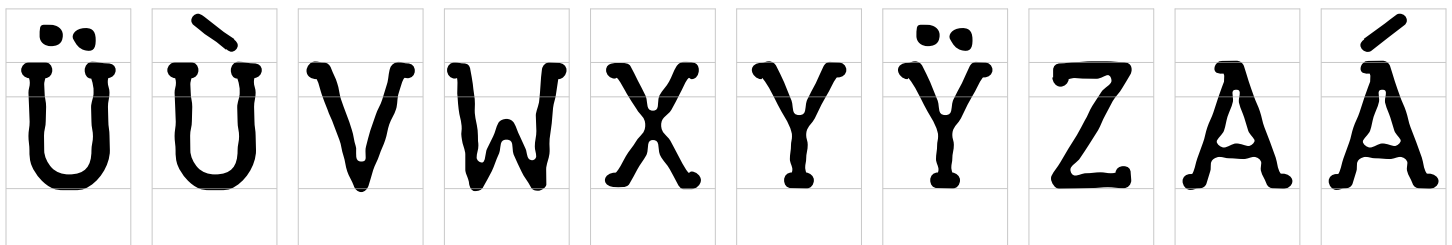
S

T

U

Uacute

Ucircumflex



Udieresis

Ugrave

V

W

X

Y

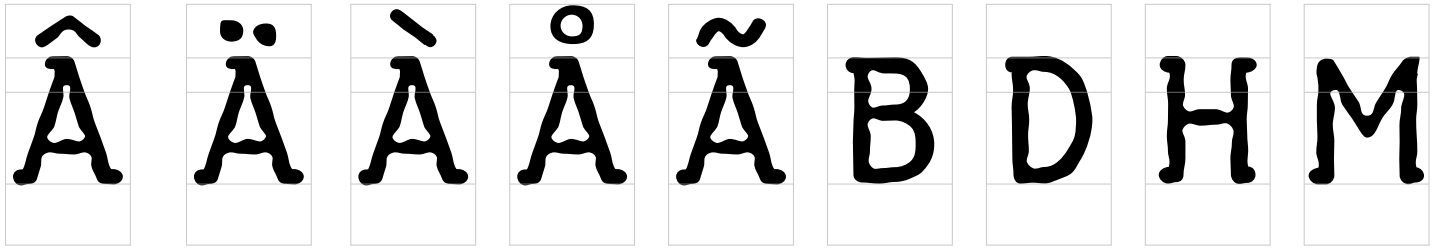
Ydieresis

Z

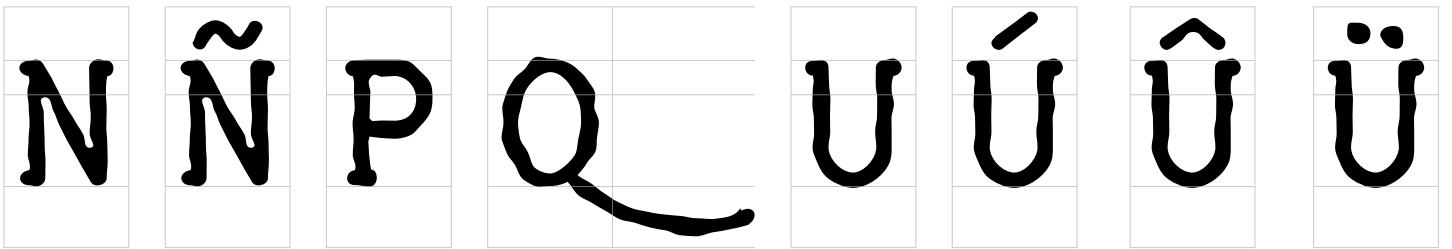
A.ss01

Acute.ss01

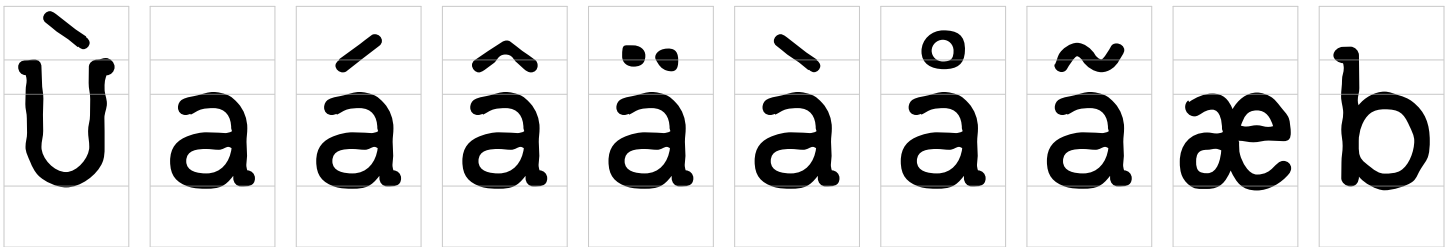
72pt



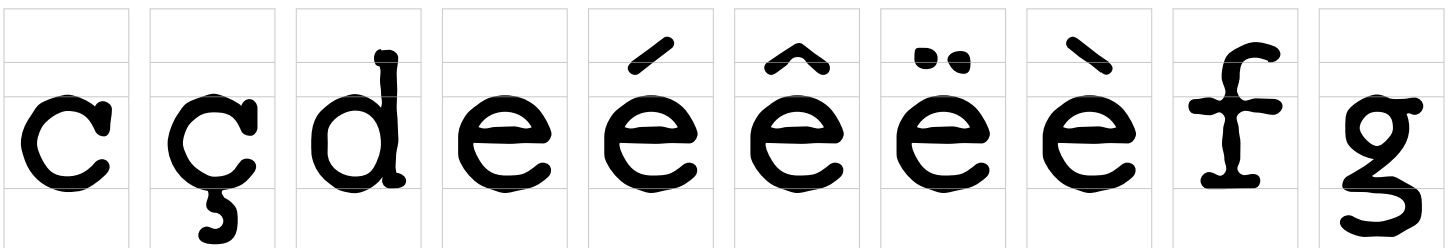
Acircumflex.ss01 Adieresis.ss01 Agrave.ss01 Aring.ss01 Atilde.ss01 B.ss01 D.ss01 H.ss01 M.ss01



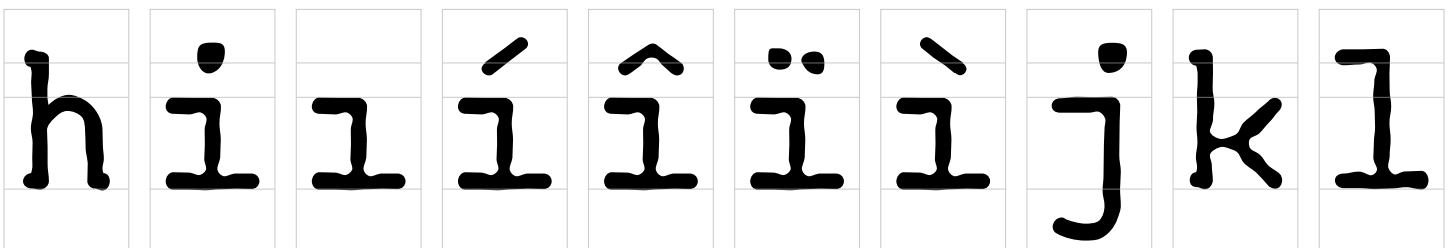
N.ss01 Ntilde.ss01 P.ss01 Q.ss01 U.ss01 Uacute.ss01 Ucircumflex.ss01 Udieresis.ss01



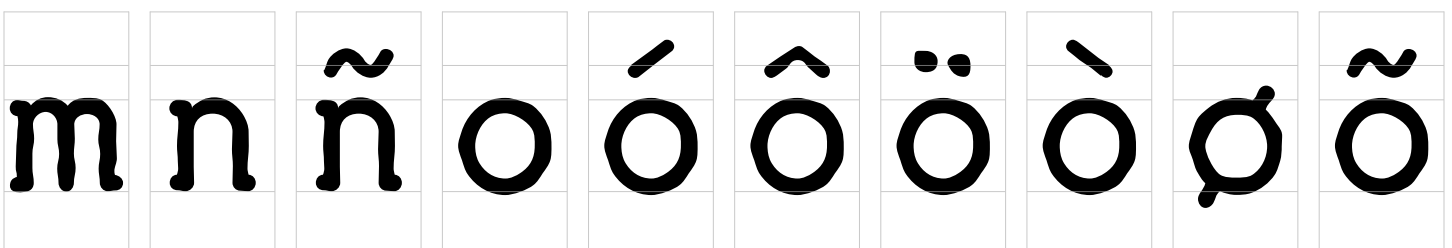
Ugrave.ss01 a aacute acircumflex adieresis agrave aring atilde ae b



c ccedilla d e eacute ecircumflex edieresis egrave f g



h i dotlessi iacute icircumflex idieresis igrave j k l



m n ntilde o oacute ocircumflex odieresis ograve oslash otilde

72pt

æ	þ	q	r	s	ß	t	u	ú	û
---	---	---	---	---	---	---	---	---	---

oe

p

q

r

s

germandbls

t

u

uacute

ucircumflex

ü	ù	v	w	x	y	ÿ	z	á	á
---	---	---	---	---	---	---	---	---	---

udieresis

ugrave

v

w

x

y

ydieresis

z

a.ss01

aacute.ss01

â	ä	à	å	ã	b	c	ç	d
---	---	---	---	---	---	---	---	---

acircumflex.ss01

adieresis.ss01

agrave.ss01

aring.ss01

atilde.ss01

b.ss01

c.ss01

ccedilla.ss01

d.ss01

g	p	q	y	ÿ	fi	fl	ª	º	0
---	---	---	---	---	----	----	---	---	---

g.ss01

p.ss01

q.ss01

y.ss01

ydieresis.ss01

fi

fl

ordfeminine

ordmasculine

zero

1	2	3	4	5	6	7	8	9	/
---	---	---	---	---	---	---	---	---	---

one

two

three

four

five

six

seven

eight

nine

fraction

•	,	:	;	...	!	¡	?	¿
---	---	---	---	-----	---	---	---	---

uni00A0

period

comma

colon

semicolon

ellipsis

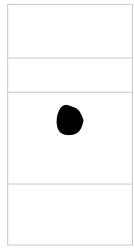
exclam

exclamdown

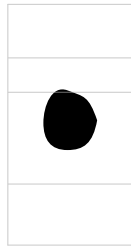
question

questiondown

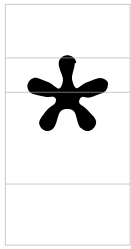
72pt



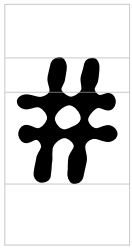
periodcentered



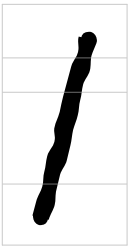
bullet



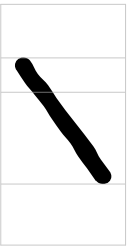
asterisk



numersign



slash



backslash



hyphen



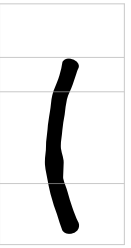
endash



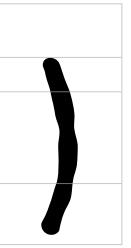
emdash



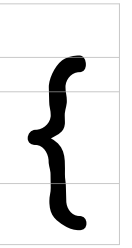
underscore



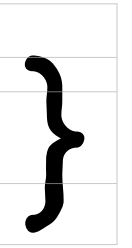
parenleft



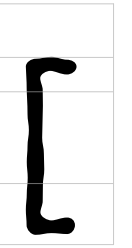
parenright



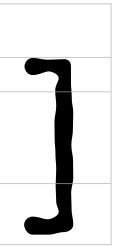
braceleft



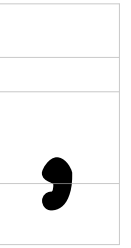
braceright



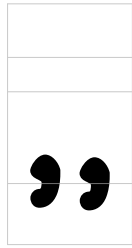
bracketleft



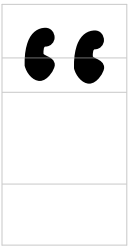
bracketright



quotesingbase



quotedblbase



quotedblleft



quotedblright



quotefirst



quoteright



guillemotleft



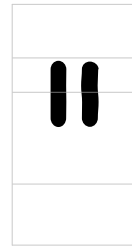
guillemotright



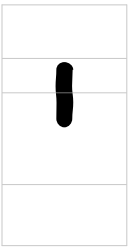
guilsingleft



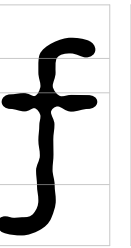
guilsingright



quotedbl



quotesingle



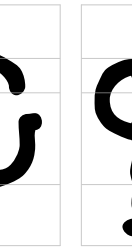
florin



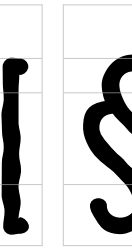
uniF8FF



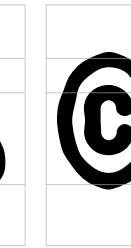
at



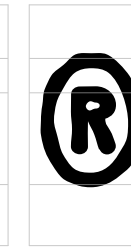
ampersand



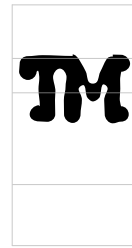
paragraph



section



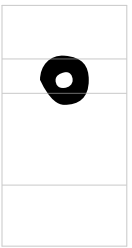
copyright



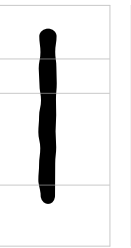
registered



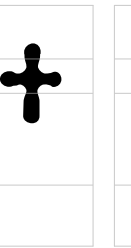
trademark



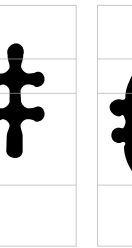
degree



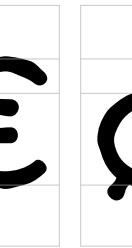
bar



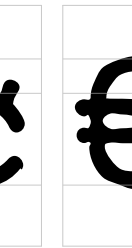
dagger



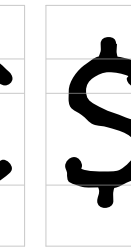
daggerdbl



Euro



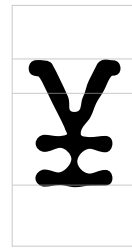
cent



currency



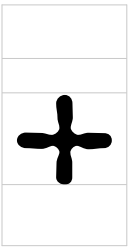
dollar



sterling



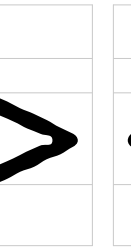
yen



plus



equal



greater



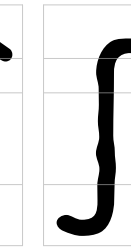
less



asciitilde



logicalnot



asciicircum



integral



percent



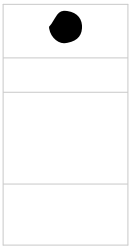
perthousand



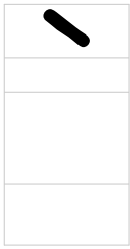
72pt



dieresis



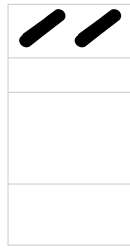
dotaccent



grave



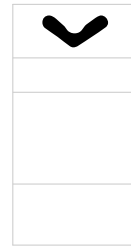
acute



hungarumlaut



circumflex



caron



breve



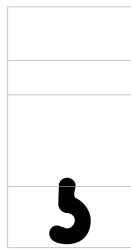
ring



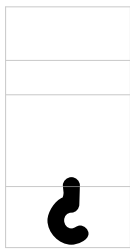
tilde



macron



cedilla



ogonek

ROUGH WEEKEND WAS DESIGNED BY PIETER VAN ROSMALEN.  
PUBLISHED BY GARAGEFONTS LLC.