

w W

NICE WEEKEND SPECIMEN

GARAGEFONTS.COM

Nice Weekend

Light

Light Italic

Regular

Italic

Bold

Bold Italic

EXHORTING

AMAZEMENT

QUARTERLY

EXCHANGED

THYRISTOR

FIREPROOF

LOGISTICS

DISGRACES

SUPPORTED

FANCIBLE

DESCRIBED

STRESSFUL

Misdeeds

Purplish

Signings

Banishes

Giggling

Squealer

Excepted

Fanciest

Exploder

Piracies

Codename

Barrages

From the beginning of the systematic study of the heavens, the fact has been recognized that the form of the Milky Way denotes the scheme of the sidereal system. At first it was thought that the shape of the system was that of a vast round disk, flat like a cheese, and filled with stars, our sun and his relatively few neighbors being placed near the center. According to this view, the galactic belt was an effect of perspective; for when looking in the direction of the plane of the disk, the eye ranged through an immense extension of stars which blended into a glimmering blur, surrounding us like a ring; while when looking out from the sides of the disk we saw but few stars, and in those directions the heavens appeared relatively blank. Finally it was recognized that this theory did not correspond with the observed appearances, and it became evident that the Milky Way was not a mere effect of perspective, but an actual band of enormously distant stars, forming a circle about the sphere, the central opening of the ring (containing many scattered stars)

From the beginning of the systematic study of the heavens, the fact has been recognized that the form of the Milky Way denotes the scheme of the sidereal system. At first it was thought that the shape of the system was that of a vast round disk, flat like a cheese, and filled with stars, our sun and his relatively few neighbors being placed near the center. According to this view, the galactic belt was an effect of perspective; for when looking in the direction of the plane of the disk, the eye ranged through an immense extension of stars which blended into a glimmering blur, surrounding us like a ring; while when looking out from the sides of the disk we saw but few stars, and in those directions the heavens appeared relatively blank. Finally it was recognized that this theory did not correspond with the observed appearances, and it became evident that the Milky Way was not a mere effect of perspective, but an actual band of enormously distant stars, forming a circle about the sphere, the central opening of the ring (containing many scattered stars)

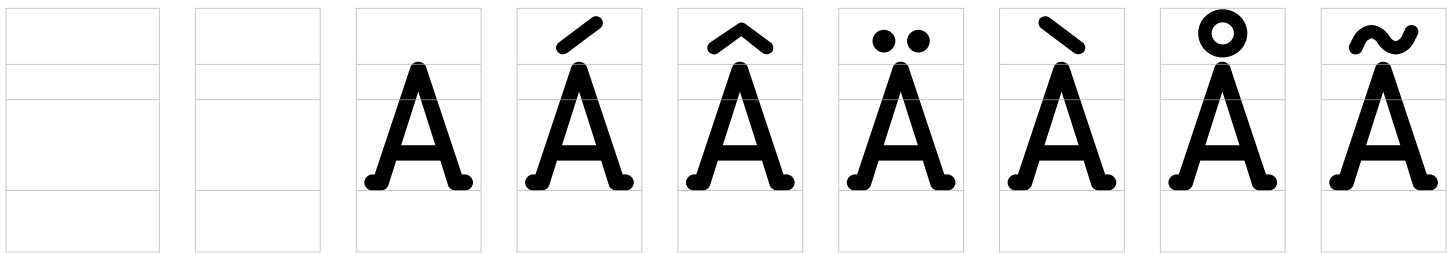
From the beginning of the systematic study of the heavens, the fact has been recognized that the form of the Milky Way denotes the scheme of the sidereal system. At first it was thought that the shape of the system was that of a vast round disk, flat like a cheese, and filled with stars, our sun and his relatively few neighbors being placed near the center. According to this view, the galactic belt was an effect of perspective; for when looking in the direction of the plane of the disk, the eye ranged through an immense extension of stars which blended into a glimmering blur, surrounding us like a ring; while when looking out from the sides of the disk we saw but few stars, and in those directions the heavens appeared relatively blank. Finally it was recognized that this theory did not correspond with the observed appearances, and it became evident that the Milky Way was not a mere effect of perspective, but an actual band of enormously distant stars, forming a circle about the sphere, the central opening of the ring (containing many scattered stars)

From the beginning of the systematic study of the heavens, the fact has been recognized that the form of the Milky Way denotes the scheme of the sidereal system. At first it was thought that the shape of the system was that of a vast round disk, flat like a cheese, and filled with stars, our sun and his relatively few neighbors being placed near the center. According to this view, the galactic belt was an effect of perspective; for when looking in the direction of the plane of the disk, the eye ranged through an immense extension of stars which blended into a glimmering blur, surrounding us like a ring; while when looking out from the sides of the disk we saw but few stars, and in those directions the heavens appeared relatively blank. Finally it was recognized that this theory did not correspond with the observed appearances, and it became evident that the Milky Way was not a mere effect of perspective, but an actual band of enormously distant stars, forming a circle about the sphere, the central opening of the ring (containing many scattered stars)

From the beginning of the systematic study of the heavens, the fact has been recognized that the form of the Milky Way denotes the scheme of the sidereal system. At first it was thought that the shape of the system was that of a vast round disk, flat like a cheese, and filled with stars, our sun and his relatively few neighbors being placed near the center. According to this view, the galactic belt was an effect of perspective; for when looking in the direction of the plane of the disk, the eye ranged through an immense extension of stars which blended into a glimmering blur, surrounding us like a ring; while when looking out from the sides of the disk we saw but few stars, and in those directions the heavens appeared relatively blank. Finally it was recognized that this theory did not correspond with the observed appearances, and it became evident that the Milky Way was not a mere effect of perspective, but an actual band of enormously distant stars, forming a circle about the sphere, the central opening of the ring (containing many scattered stars)

From the beginning of the systematic study of the heavens, the fact has been recognized that the form of the Milky Way denotes the scheme of the sidereal system. At first it was thought that the shape of the system was that of a vast round disk, flat like a cheese, and filled with stars, our sun and his relatively few neighbors being placed near the center. According to this view, the galactic belt was an effect of perspective; for when looking in the direction of the plane of the disk, the eye ranged through an immense extension of stars which blended into a glimmering blur, surrounding us like a ring; while when looking out from the sides of the disk we saw but few stars, and in those directions the heavens appeared relatively blank. Finally it was recognized that this theory did not correspond with the observed appearances, and it became evident that the Milky Way was not a mere effect of perspective, but an actual band of enormously distant stars, forming a circle about the sphere, the central opening of the ring (containing many scattered stars)

72pt



.notdef

space

A

Aacute

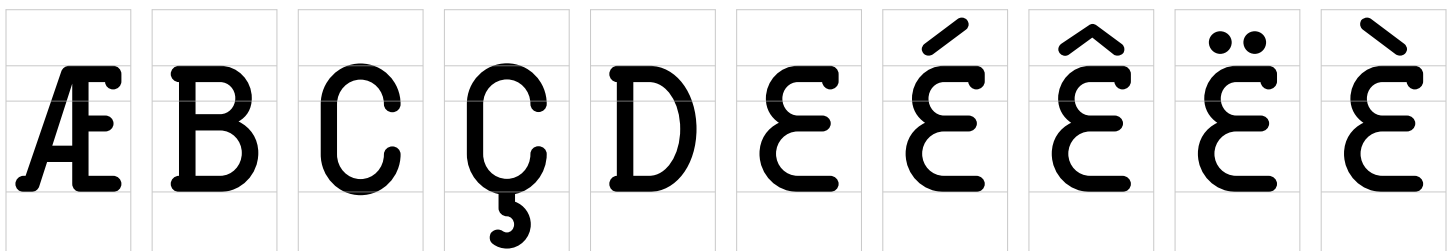
Acircumflex

Adieresis

Agrave

Aring

Atilde



AE

B

C

Ccedilla

D

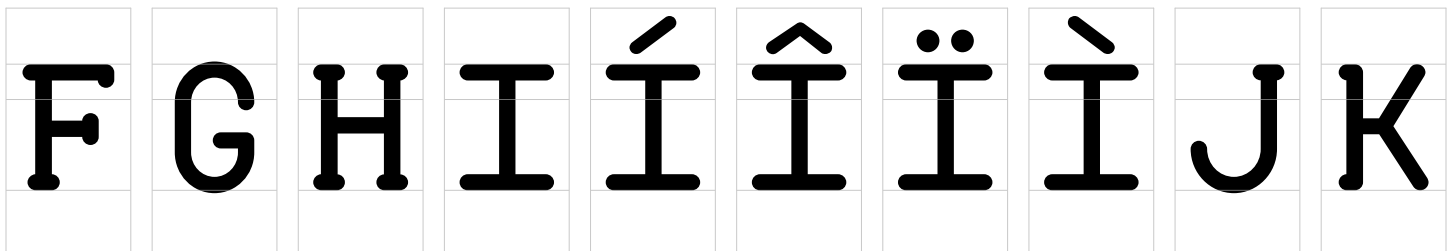
E

Eacute

Ecircumflex

Edieresis

Egrave



F

G

H

I

Iacute

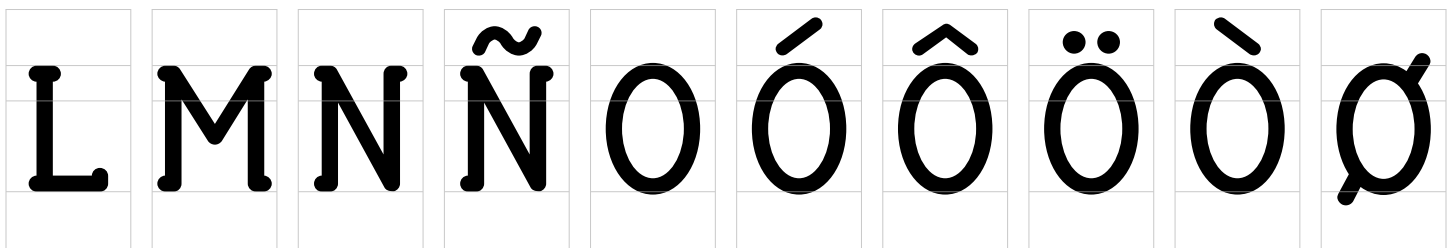
Icircumflex

Idieresis

Igrave

J

K



L

M

N

Ntilde

O

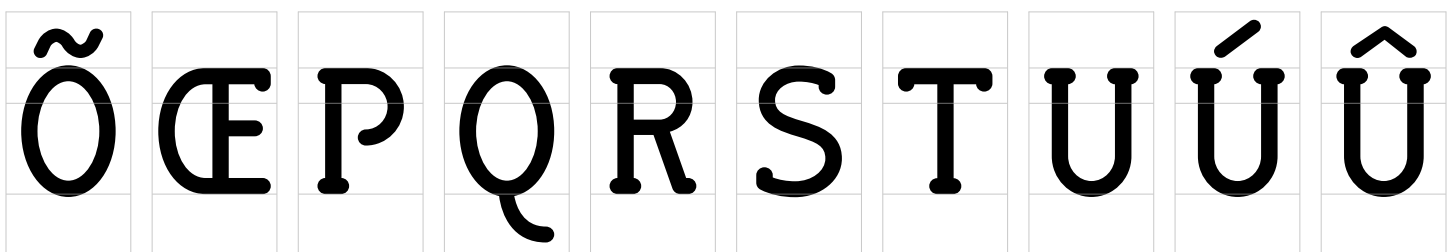
Oacute

Ocircumflex

Odieresis

Ograve

Oslash



Otilde

OE

P

Q

R

S

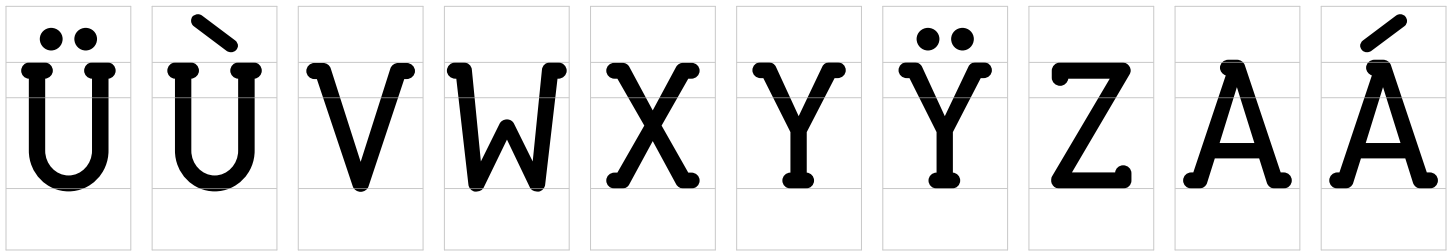
T

U

Uacute

Ucircumflex

72pt



Udieresis

Ugrave

V

W

X

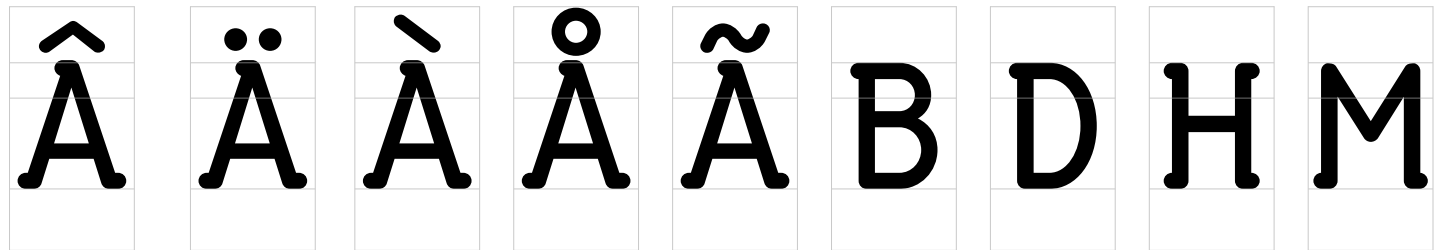
Y

Ydieresis

Z

A.ss01

Aacute.ss01



Acircumflex.ss01

Adieresis.ss01

Agrave.ss01

Aring.ss01

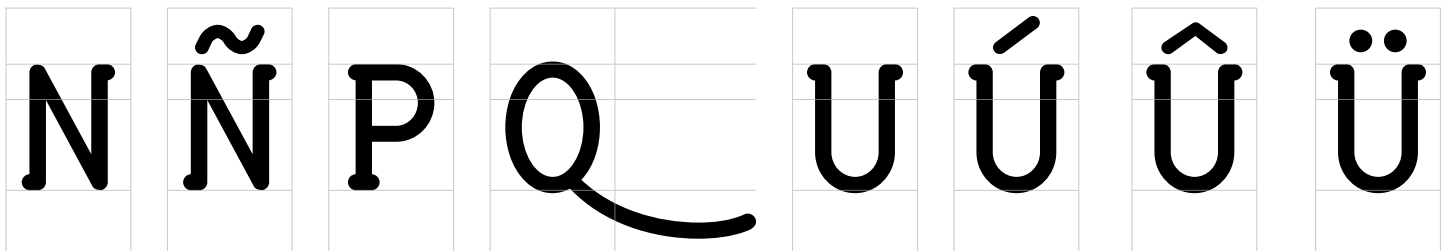
Atilde.ss01

B.ss01

D.ss01

H.ss01

M.ss01



N.ss01

Ntilde.ss01

P.ss01

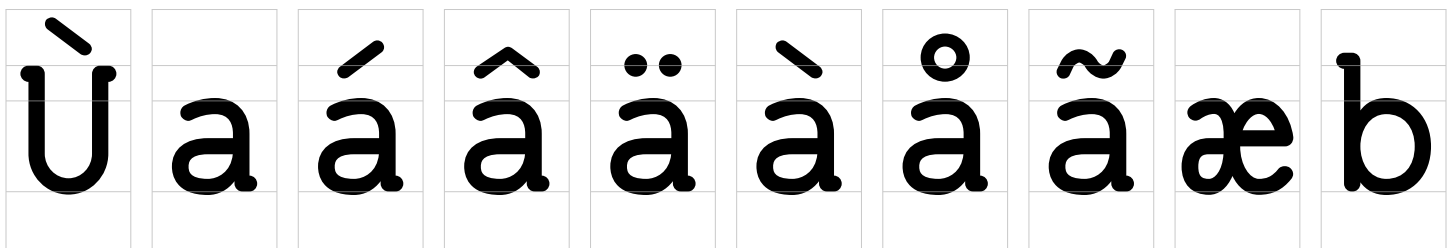
Q.ss01

U.ss01

Uacute.ss01

Ucircumflex.ss01

Udieresis.ss01



Ugrave.ss01

a

aacute

acircumflex

adieresis

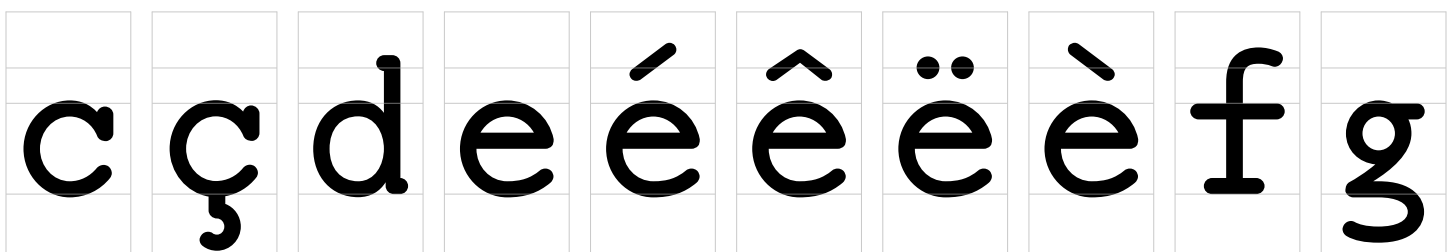
agrave

aring

atilde

ae

b



c

cedilla

d

e

eacute

ecircumflex

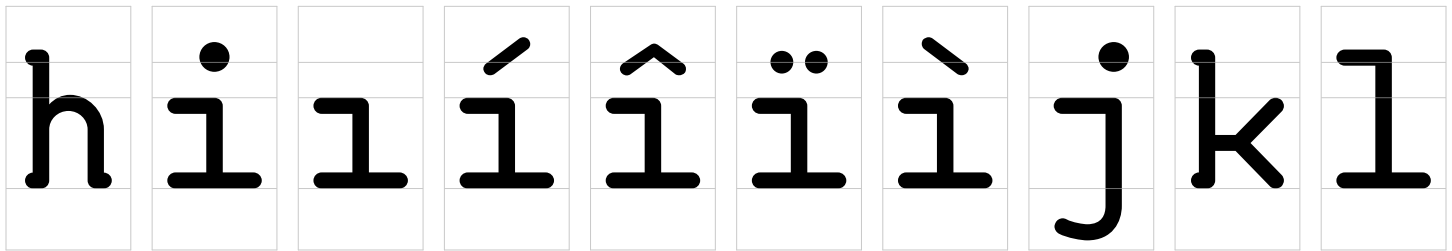
edieresis

egrave

f

g

72pt



h

i

dotlessi

iacute

icircumflex

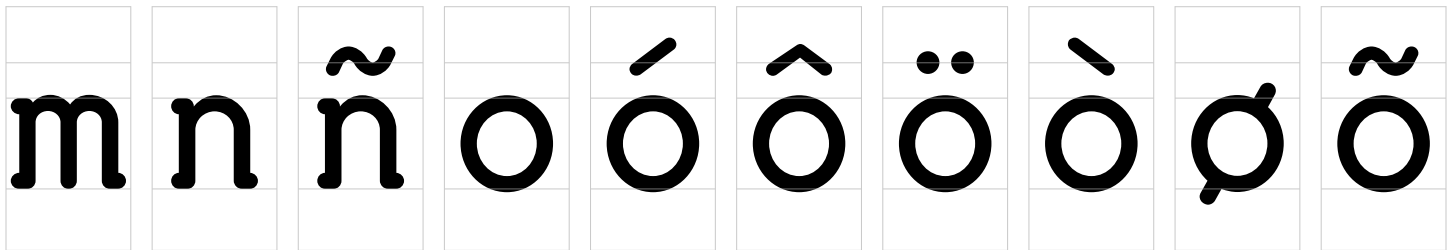
idieresis

igrave

j

k

l



m

n

ntilde

o

oacute

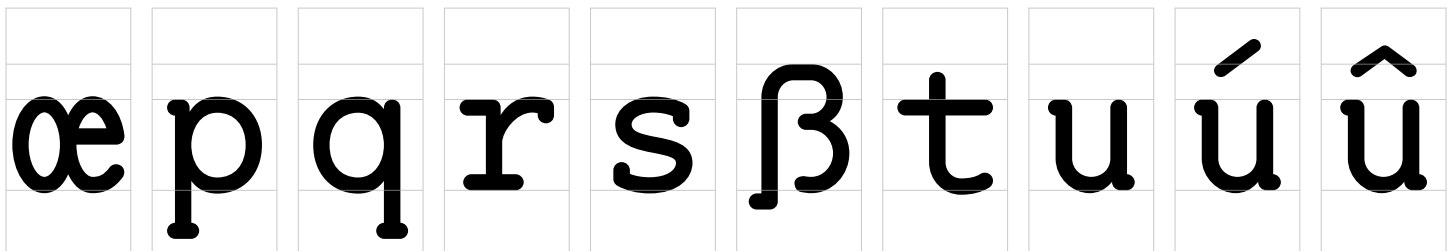
ocircumflex

odieresis

ograve

oslash

otilde



œ

p

q

r

s

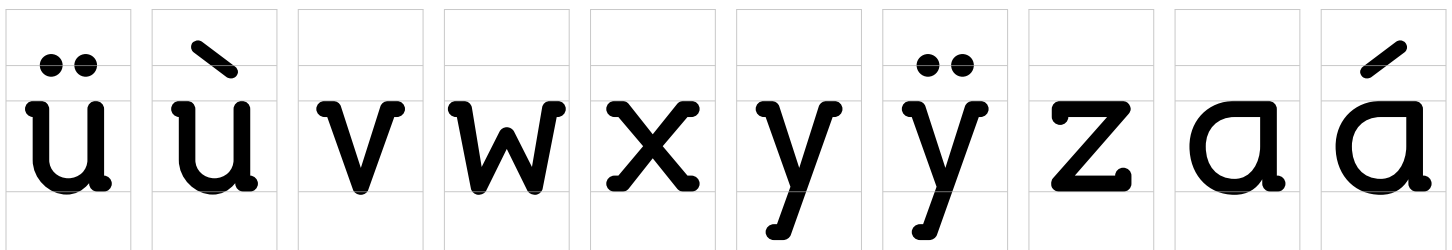
germandbls

t

u

uacute

ucircumflex



ü

ù

v

w

x

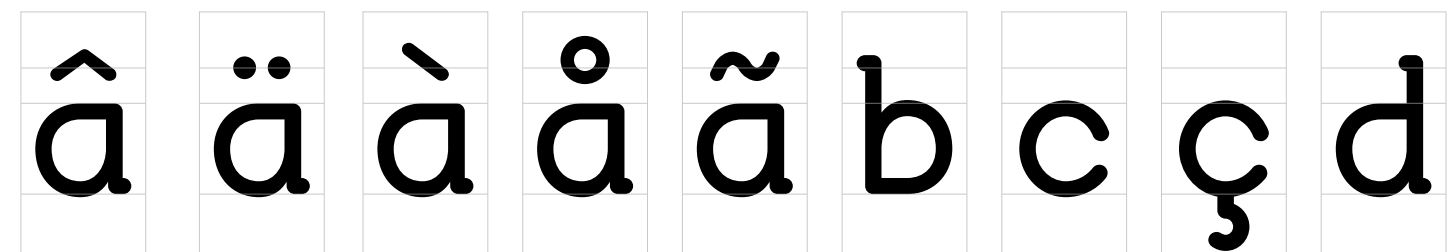
y

ydieresis

z

a.ss01

acute.ss01



acircumflex.ss01

adieresis.ss01

agrave.ss01

aring.ss01

atilde.ss01

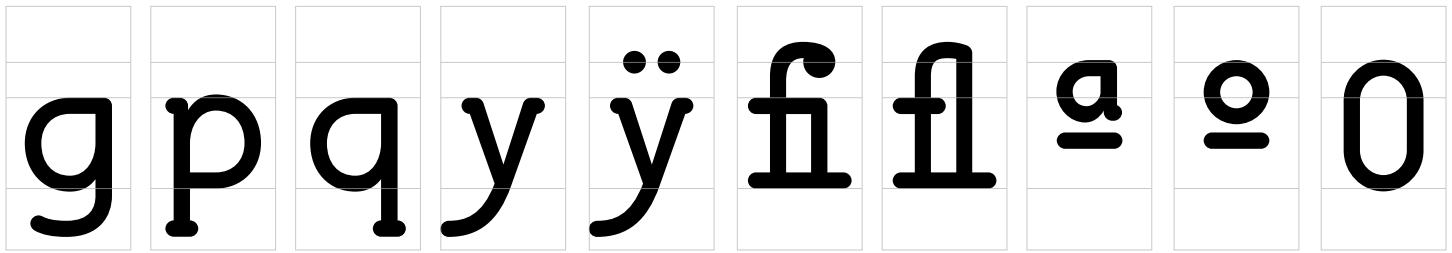
b.ss01

c.ss01

cedilla.ss01

d.ss01

72pt



g.ss01

p.ss01

q.ss01

y.ss01

ydiereis.ss01

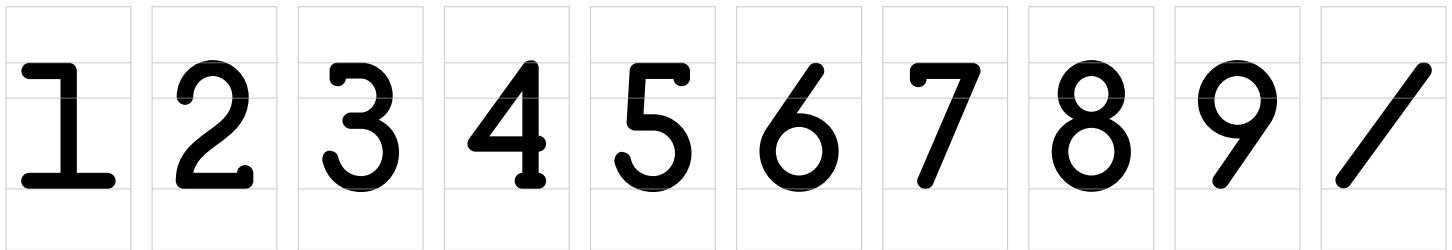
fi

fl

ordfeminine

ordmasculine

zero



one

two

three

four

five

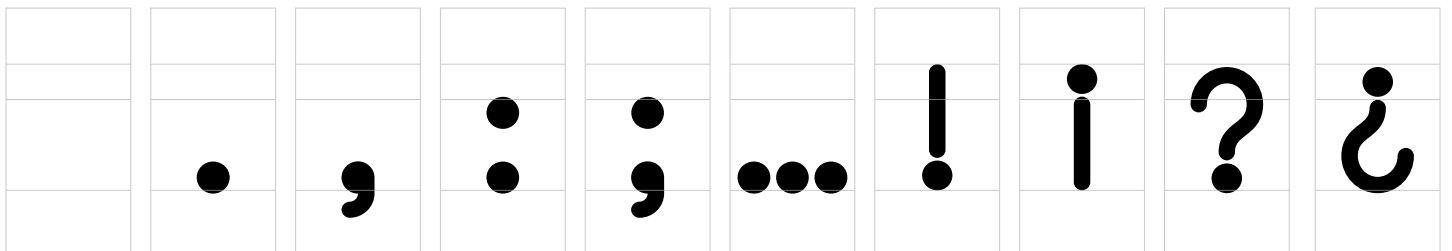
six

seven

eight

nine

fraction



uni00A0

period

comma

colon

semicolon

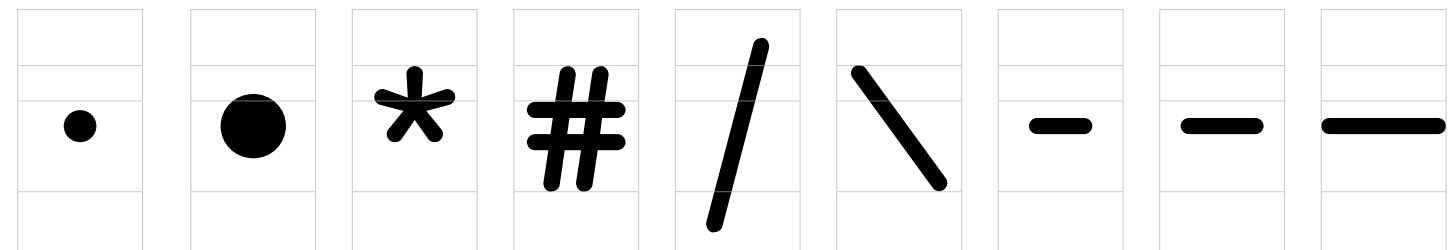
ellipsis

exclam

exclamdown

question

questiondown



periodcentered

bullet

asterisk

numbersign

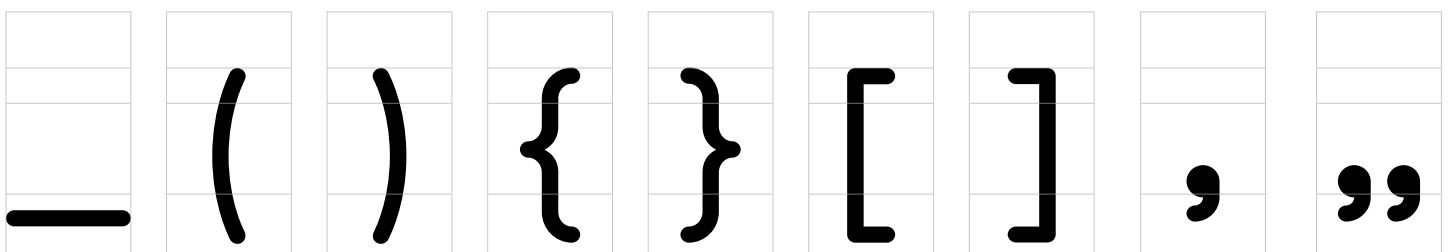
slash

backslash

hyphen

endash

emdash



underscore

parenleft

parenright

braceleft

braceright

bracketleft

bracketright

quotesinglbase

quotedblbase

72pt

quotedbleft	quotedbright	quoteleft	quoteright	guillemotleft	guillemotright	guilsingleft	guilsingright	quotedbl

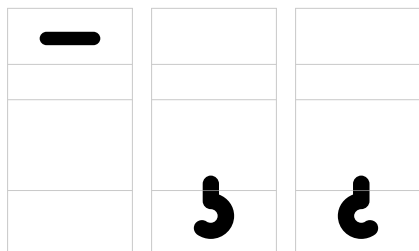
quotesingle	florin	uniF8FF	at	ampersand	paragraph	section	copyright	registered	trademark

degree	bar	dagger	daggerdbl	Euro	cent	currency	dollar	sterling	yen

plus	equal	greater	less	asciitilde	logicalnot	asciicircum	integral	percent	perthousand

dieresis	dotaccent	grave	acute	hungarumlaut	circumflex	caron	breve	ring	tilde

72pt



macron

cedilla

ogonek

NICE WEEKEND WAS DESIGNED BY PIETER VAN ROSMALEN.
PUBLISHED BY GARAGEFONTS LLC.