

A

FONO SPECIMEN

GARAGEFONTS.COM

FONO

Compressed

Compressed Oblique

Medium

Medium Oblique

Expanded

Expanded Oblique

DEMYTHOLOGISED
PERPETUATOR
CONSUMED
ANESTHETIZATION
UNDERSTATED
THEORISED

INTERPRETATIONS

DEMARCATIION

SPHERICAL

FUNDAMENTALISM

COMMANDERS

ANNUITANT

Untransportable

Escapements

Conquered

Transformations

Maximisation

Keystroke

Appropriateness

Contextually

Retargets

Photosynthesize

Unventilated

Disfigures

From the beginning of the systematic study of the heavens, the fact has been recognized that the form of the Milky Way denotes the scheme of the sidereal system. At first it was thought that the shape of the system was that of a vast round disk, flat and filled with stars, our sun and his relatively few neighbors being placed near the center. According to this view, the galactic belt was an effect of perspective; for when looking in the direction of the plane of the disk, the eye ranged through an immense extension of stars which blended into a glimmering blur, surrounding us like a ring; while when looking out from the sides of the disk we saw but few stars, and in those directions the heavens appeared relatively blank. Finally it was recognized that this theory did not correspond with the observed appearances, and it became evident that the Milky Way was not an effect of perspective, but an actual band of enormously distant stars, forming a circle about the sphere, the central opening of the ring (containing many scattered stars) being many times broader than the width of the ring itself. Our sun is one of the stars in the central opening. In quoting an outline of this strikingly original theory the present writer should be understood as assenting to it. That it appears bizarre is not, in itself, a reason for rejecting it, when we are dealing with a subject as mysterious and enigmatical as the Milky Way; but the serious objection is that the theory does not sufficiently explain the observed phenomena. There is too much evidence that the Milky Way is an organic system, however fantastic it may appear, to believe that it can only be a rift in chaotic clouds. As with every organism, we find that its parts are more or less coordinated in its ensemble. Among all the strange things that the Milky Way contains there is nothing so extraordinary as the fact that an astronomer must many times have found himself marveling at it in those comparatively rare nights when it

From the beginning of the systematic study of the heavens, the fact has been recognized that the form of the Milky Way denotes the scheme of the sidereal system. At first it was thought that the shape of the system was that of a vast round disk, flat and filled with stars, our sun and his relatively few neighbors being placed near the center. According to this view, the galactic belt was an effect of perspective; for when looking in the direction of the plane of the disk, the eye ranged through an immense extension of stars which blended into a glimmering blur, surrounding us like a ring; while when looking out from the sides of the disk we saw but few stars, and in those directions the heavens appeared relatively blank. Finally it was recognized that this theory did not correspond with the observed appearances, and it became evident that the Milky Way was not an effect of perspective, but an actual band of enormously distant stars, forming a circle about the sphere, the central opening of the ring (containing many scattered stars) being many times broader than the width of the ring itself. Our sun is one of the stars in the central opening. In quoting an outline of this strikingly original theory the present writer should be understood as assenting to it. That it appears bizarre is not, in itself, a reason for rejecting it, when we are dealing with a subject as mysterious and enigmatical as the Milky Way; but the serious objection is that the theory does not sufficiently explain the observed phenomena. There is too much evidence that the Milky Way is an organic system, however fantastic it may appear, to believe that it can only be a rift in chaotic clouds. As with every organism, we find that its parts are more or less coordinated in its ensemble. Among all the strange things that the Milky Way contains there is nothing so extraordinary as the fact that an astronomer must many times have found himself marveling at it in those comparatively rare nights when it

From the beginning of the systematic study of the heavens, has been recognized that the form of the Milky Way denotes of the sidereal system. At first it was thought that the shape of the system was that of a vast round disk, flat like a cheese, and filled with stars, our sun and his relatively few neighbors being placed near the center. According to this view, the galactic belt was an effect of perspective; for when looking in the direction of the plane of the disk, the eye ranged through an immense extension of stars which blended into a glimmering blur, surrounding us like a ring; while when looking out from the sides of the disk we saw but few stars, and in those directions the heavens appeared relatively blank. Finally it was recognized that this theory did not correspond with the observed appearances, and it became evident that the Milky Way was not a perspective, but an actual band of enormously distant stars, forming a circle about the central opening of the ring (containing many scattered stars) being many times broader of the ring itself. Our sun is one of the scattered stars in the central opening. In quoting this strikingly original theory the present writer should not be understood as assuming that what appears bizarre is not, in itself, a reason for rejecting it, when we are dealing with a highly technical and enigmatical a subject as the Milky Way; but the serious objection is that the theory does not sufficiently accord with the observed phenomena. There is too much evidence that the

From the beginning of the systematic study of the heavens, the fact has been recognized that the form of the Milky Way denotes the scheme of the sidereal system. At first it was thought that the shape of the system was that of a vast round disk, flat like a cheese, and filled with stars, and his relatively few neighbors being placed near the center. According to this view, the galactic belt was an effect of perspective; for when looking in the direction of the plane of the disk, the eye ranged through an immense extension of stars which blended into a glimmering blur, surrounding us like a ring; while when looking out from the sides of the disk we saw but few stars, and in those directions the heavens appeared relatively blank. Finally it was recognized that this theory did not correspond with the observed appearances, and it became evident that the Milky Way was not a perspective, but an actual band of enormously distant stars, forming a circle about the central opening of the ring (containing many scattered stars) being many times broader of the ring itself. Our sun is one of the scattered stars in the central opening. In quoting this strikingly original theory the present writer should not be understood as assuming that what appears bizarre is not, in itself, a reason for rejecting it, when we are dealing with a highly technical and enigmatical a subject as the Milky Way; but the serious objection is that the theory does not sufficiently accord with the observed phenomena. There is too much evidence that the

From the beginning of the systematic study of heavens, the fact has been recognized that the form of the Milky Way denotes the scheme of the system. At first it was thought that the shape of the system was that of a vast round disk, flat like a cheese and filled with stars, our sun and his relatively neighbors being placed near the center. According to this view, the galactic belt was an effect of perspective; for when looking in the direction of the plane of the disk, the eye ranged through an immense extension of stars which blended into a glimmering blur, surrounding us like a ring; while when looking out from the sides

From the beginning of the systematic study of the heavens, the fact has been recognized that the form of the Milky Way denotes the scheme of the system. At first it was thought that the shape of the system was that of a vast round disk, flat like a cheese, and filled with stars, our sun and his relatively neighbors being placed near the center. According to this view, the galactic belt was an effect of perspective; for when looking in the direction of the plane of the disk, the eye ranged through an immense extension of stars which blended into a glimmering blur, surrounding us like a ring; while when looking out from the sides of the disk we saw but few stars, and in those directions the sky appeared relatively blank. Finally it was recognized that this theory corresponded with the observed appearances, and it became evident that the galactic belt was not a mere effect of perspective, but an actual band of enormous stars, forming a circle about the sphere, the central opening of the ring (containing many scattered stars) being many times broader than the width of the band itself. Our sun is one of the scattered stars in the central opening. In an outline of this strikingly original theory the present writer should

FROM THE BEGINNING OF THE SYSTEMATIC STUDY OF THE HEAVENS, THE FACT HAS BEEN RECOGNIZED THAT THE FORM OF THE SIDEREAL SYSTEM IS THAT OF A VAST ROUND DISK, LIKE A CHEESE, AND FILLED WITH STARS, OUR SUN AND HIS RELATIVELY FEW NEIGHBORS BEING PLACED NEAR THE CENTER. ACCORDING TO THIS VIEW, THE GALACTIC BELT WAS AN EFFECT OF PERSPECTIVE; FOR WHEN LOOKING IN THE DIRECTION OF THE PLANE OF THE DISK, THE EYE RANGED THROUGH AN IMMENSE EXTENSION OF STARS WHICH BLENDED INTO A GLIMMERING BLUR, SURROUNDING US LIKE A RING; WHILE WHEN LOOKING OUT FROM THE SIDES OF THE DISK WE SAW BUT FEW STARS, AND IN THOSE DIRECTIONS THE HEAVENS APPEARED RELATIVELY BLANK. FINALLY IT WAS RECOGNIZED THAT THIS THEORY DID NOT CORRESPOND WITH THE OBSERVED APPEARANCES, AND IT BECAME EVIDENT THAT THE BELT WAS NOT A MERE EFFECT OF PERSPECTIVE, BUT AN ACTUAL BAND OF ENORMOUSLY DISTANT STARS, FORMING A CIRCLE ABOUT THE SPHERE, THE CENTRAL OPENING OF THE RING (CONTAINING MANY

SCATTERED STARS IN THE CENTRAL OPENING. IN QUOTING AN OUTLINE OF THIS STRIKINGLY ORIGINAL THEORY THE PRESENT AUTHOR CAN BE UNDERSTOOD AS ASSENTING TO IT. THAT IT APPEARS BIZARRE IS NOT, IN ITSELF, A REASON FOR REJECTING IT, WHEN WE CONSIDER SO PROBLEMATICAL AND ENIGMATICAL A SUBJECT AS THE MILKY WAY; BUT THE SERIOUS OBJECTION IS THAT THE THEORY DOES NOT ACCORD WITH THE OBSERVED PHENOMENA. THERE IS TOO MUCH EVIDENCE THAT THE MILKY WAY IS AN ORGANIC SYSTEM, IN FORM, TO PERMIT THE BELIEF THAT IT CAN ONLY BE A RIFT IN CHAOTIC CLOUDS. AS WITH EVERY ORGANISM, WE FIND THAT THE BELT IS LESS CLEARLY REPEATED IN ITS ENSEMBLE. AMONG ALL THE STRANGE THINGS THAT THE MILKY WAY CONTAINS THERE IS NONE MORE STRIKINGLY REPEATED AS ITSELF. EVERY ASTRONOMER MUST MANY TIMES HAVE FOUND HIMSELF MARVELING AT IT IN THOSE COMPARATIVE

FROM THE BEGINNING OF THE SYSTEMATIC STUDY OF THE HEAVENS, HAS BEEN RECOGNIZED THAT THE FORM OF THE MILKY WAY DENOTE SCHEME OF THE SIDEREAL SYSTEM. AT FIRST IT WAS THOUGHT THAT SHAPE OF THE SYSTEM WAS THAT OF A VAST ROUND DISK, FLAT LIKE *AND FILLED WITH STARS, OUR SUN AND HIS RELATIVELY FEW NEIGHBORS PLACED NEAR THE CENTER. ACCORDING TO THIS VIEW, THE GALACTIC AN EFFECT OF PERSPECTIVE; FOR WHEN LOOKING IN THE DIRECTION OF OF THE DISK, THE EYE RANGED THROUGH AN IMMENSE EXTENSION OF WHICH BLENDED INTO A GLIMMERING BLUR, SURROUNDING US LIKE A RING; WHILE WHEN LOOKING OUT FROM THE SIDES OF THE DISK WE SAW BUT FEW STARS, AND IN THOSE DIRECTIONS THE HEAVENS APPEARED RELATIVELY BLANK. FINALLY IT WAS RECOGNIZED THAT THIS THEORY DID NOT CORRESPOND WITH THE*

FROM THE BEGINNING OF THE SYSTEMATIC STUDY OF THE HEAVENS, THE FACT HAS BEEN RECOGNIZED THAT THE MILKY WAY DENOTES THE SCHEME OF THE SIDEREAL SYSTEM. AT FIRST IT WAS THOUGHT OF THE SYSTEM WAS THAT OF A VAST ROUND DISK, FLAT LIKE A CHEESE, AND FILLED WITH STARS, RELATIVELY FEW NEIGHBORS BEING PLACED NEAR THE CENTER. ACCORDING TO THIS VIEW, THE GALACTIC AN EFFECT OF PERSPECTIVE; FOR WHEN LOOKING IN THE DIRECTION OF THE PLANE OF THE DISK, THROUGH AN IMMENSE EXTENSION OF STARS WHICH BLENDED INTO A GLIMMERING BLUR, SURROUNDING US LIKE A RING; WHILE WHEN LOOKING OUT FROM THE SIDES OF THE DISK WE SAW BUT FEW STARS, AND IN THOSE DIRECTIONS THE HEAVENS APPEARED RELATIVELY BLANK. FINALLY IT WAS RECOGNIZED THAT THIS THEORY DID NOT CORRESPOND WITH THE OBSERVED APPEARANCES, AND IT BECAME EVIDENT THAT THE MILKY WAY WAS NOT A RING, BUT AN ACTUAL BAND OF ENORMOUSLY DISTANT STARS, FORMING A CIRCLE ABOUT A CENTRAL OPENING OF THE RING (CONTAINING MANY SCATTERED STARS) BEING MANY TIMES BROADER IN WIDTH OF THE RING ITSELF. OUR SUN IS ONE OF THE SCATTERED STARS IN THE CENTRAL OPENING. THE OUTLINE OF THIS STRIKINGLY ORIGINAL THEORY THE PRESENT WRITER SHOULD NOT BE UNDERSTOOD AS IMPLYING THAT IT APPEARS BIZARRE IS NOT, IN ITSELF, A REASON FOR REJECTING IT, WHEN WE ARE DEALING WITH A SCIENTIFIC AND ENIGMATICAL SUBJECT AS THE MILKY WAY; BUT THE SERIOUS OBJECTION IS THAT IT DOES NOT SUFFICIENTLY ACCORD WITH THE OBSERVED PHENOMENA. THERE IS TOO MUCH EVIDENCE

FROM THE BEGINNING OF THE SYSTEMATIC STUDY OF HEAVENS, THE FACT HAS BEEN RECOGNIZED THAT THE FORM OF THE MILKY WAY DENOTES THE SCHEME OF THE SOLAR SYSTEM. AT FIRST IT WAS THOUGHT THAT THE SHAPE OF THE SYSTEM WAS THAT OF A VAST ROUND DISK, FLAT LIKE CHEESE, AND FILLED WITH STARS, OUR SUN AND HIS FEW NEIGHBORS BEING PLACED NEAR THE CENTER. ACCORDING TO THIS VIEW, THE GALACTIC BELT WAS AN EFFECT OF PERSPECTIVE; FOR WHEN LOOKING IN THE DIRECTION OF THE PLANE OF THE DISK, THE EYE RANGED THROUGH AN IMMENSE EXTENSION OF STARS WHICH BLENDED INTO A GLIMMERING BLUR, SURROUNDING US LIKE A RING; WHILE WHEN LOOKING

FROM THE BEGINNING OF THE SYSTEMATIC STUDY OF THE HEAVENS, THE FACT HAS BEEN RECOGNIZED THAT THE FORM OF THE MILKY WAY DENOTES THE SCHEME OF THE SOLAR SYSTEM. AT FIRST IT WAS THOUGHT THAT THE SHAPE OF THE SYSTEM WAS THAT OF A VAST ROUND DISK, FLAT LIKE A CHEESE, AND FILLED WITH STARS, OUR SUN AND HIS FEW NEIGHBORS BEING PLACED NEAR THE CENTER. ACCORDING TO THIS VIEW, THE GALACTIC BELT WAS AN EFFECT OF PERSPECTIVE; FOR WHEN LOOKING IN THE DIRECTION OF THE PLANE OF THE DISK, THE EYE RANGED THROUGH AN IMMENSE EXTENSION OF STARS WHICH BLENDED INTO A GLIMMERING BLUR, SURROUNDING US LIKE A RING; WHILE WHEN LOOKING IN THE DIRECTION OF THE SIDES OF THE DISK WE SAW BUT FEW STARS, AND IN THOSE DIRECTIONS THE GALACTIC BELT APPEARED RELATIVELY BLANK. FINALLY IT WAS RECOGNIZED THAT THIS THEORY CORRESPONDS WITH THE OBSERVED APPEARANCES, AND IT BECAME EVIDENT THAT THE MILKY WAY WAS NOT A MERE EFFECT OF PERSPECTIVE, BUT AN ACTUAL BAND OF DISTANT STARS, FORMING A CIRCLE ABOUT THE SPHERE, THE CENTRAL OPENING (CONTAINING MANY SCATTERED STARS) BEING MANY TIMES BROADER THAN THE RING ITSELF. OUR SUN IS ONE OF THE SCATTERED STARS IN THE CENTRAL OPENING. QUOTING AN OUTLINE OF THIS STRIKINGLY ORIGINAL THEORY THE PRESENT WORK

À Á Â Ã Ä Å Æ B C Ç

space A Acute Acircumflex Adieresis Agrave Aring Atilde AE B C Ccedilla

Ð Æ É Ê Ë Ì Í Î Ï

D Eth E Eacute Ecircumflex Edieresis Egrave F G H I Iacute Icircumflex Idieresis Igrave

J K L Ł M N Ñ O Ó Ô Õ Ö

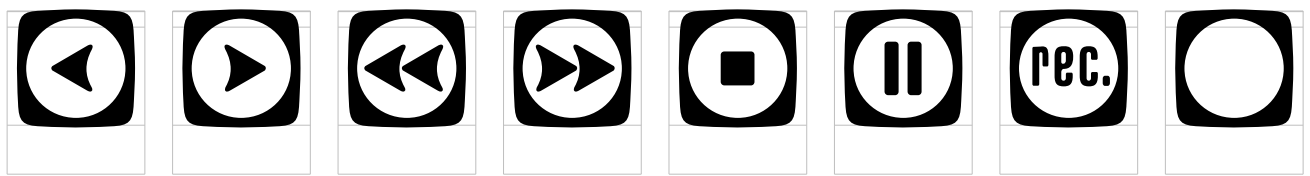
J K L Lslash M N Ntilde O Oacute Ocircumflex Odieresis Ograve

Ø Õ œ Þ Q R S Š T U Ú

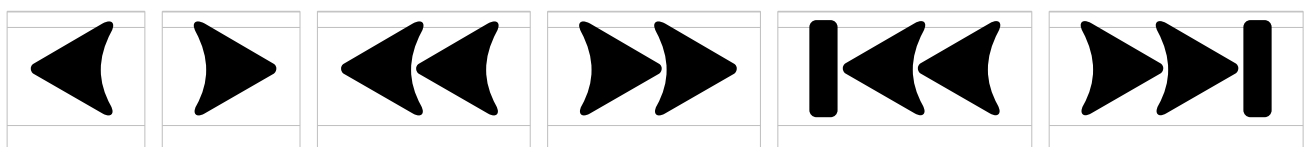
Oslash Otilde OE P Thorn Q R S Scaron T U Uacute

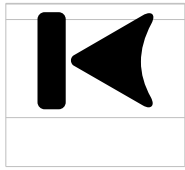
Û Ü Ù V W X Y Ý ÿ Z Ž

Ucircumflex Udieresis Ugrave V W X Y Yacute Ydieresis Z Zcaron

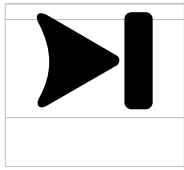


A.ornm B.ornm C.ornm D.ornm E.ornm F.ornm G.ornm H.ornm

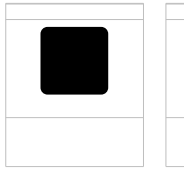




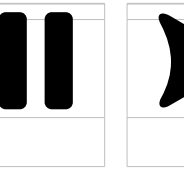
O.ornm



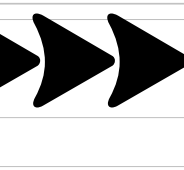
P.ornm



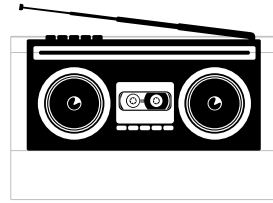
Q.ornm



R.ornm



S.ornm



T.ornm



A.ss01



Aacute.ss01



Acircumflex.ss01



Adieresis.ss01



Agrave.ss01



Aring.ss01



Atilde.ss01



AE.ss01



M.ss01



N.ss01



Ntilde.ss01



Q.ss01



T.ss01



Y.ss01



Yacute.ss01



Ydieresis.ss01



a



aacute



acircumflex



adieresis



agrave



aring



atilde



ae



b



c



ccedilla



d



eth



e



eacute



ecircumflex



edieresis



egrave



f



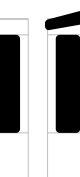
g



h



i



idotless



iacute



icircumflex



idieresis



igrave



j



k



l



lslash



m



n



ntilde



o



oacute



ocircumflex



odieresis



ograve



oslash



otilde



oe



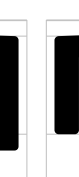
p



pthorn



q



r



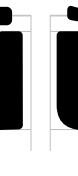
s



sacaron



sgermandbls



Ž B D F G H I I Í Î Ï J K L ł

zcaron b.ss01 d.ss01 f.ss01 g.ss01 h.ss01 i.ss01 dotlessi.ss01 iacute.ss01 icircumflex.ss01 idieresis.ss01 igrave.ss01 j.ss01 k.ss01 l.ss01 lslash.ss01

P R T U Ú û ü ù y ý ÿ Ħ

p.ss01 r.ss01 t.ss01 u.ss01 uacute.ss01 ucircumflex.ss01 udieresis.ss01 ugrave.ss01 y.ss01 yacute.ss01 ydieresis.ss01 fi

fl Ff FL ð ò Δ Ω ⊙ 0 1 2

fl fi.ss01 fl.ss01 ordfeminine ordmasculine uni0394 uni03A9 pi zero one two

3 4 5 6 7 8 9 0 1 2

three four five six seven eight nine zero.ss02 one.ss02 two.ss02

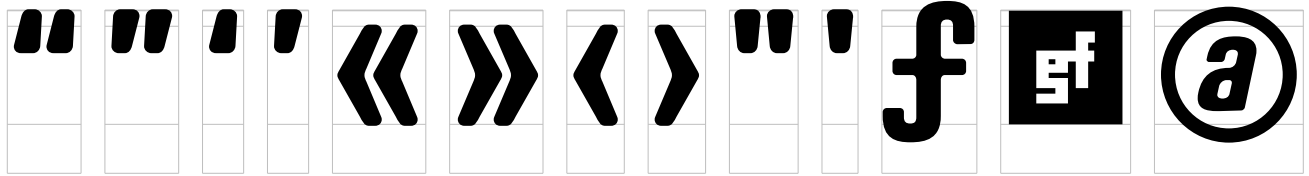
3 4 5 6 7 8 9 / 1/2

three.ss02 four.ss02 five.ss02 six.ss02 seven.ss02 eight.ss02 nine.ss02 fraction onehalf

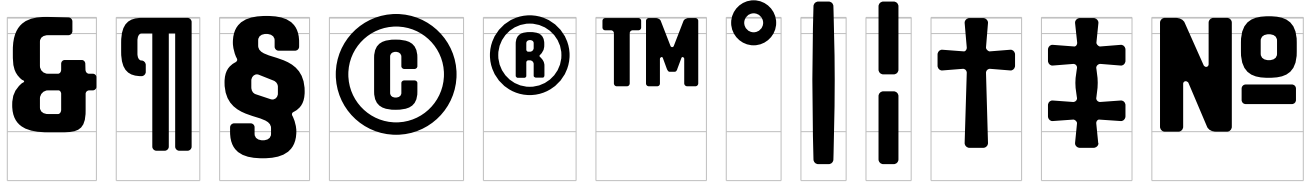
1/4 3/4 1 2 3 . , : ; ... ! i ? ¿ ° • *

onequarter threequarters uni00B9 uni00B2 uni00B3 uni00A0 period comma colon semicolon ellipsis exclamation exclamationdown question questiondown periodcentered bullet asterisk

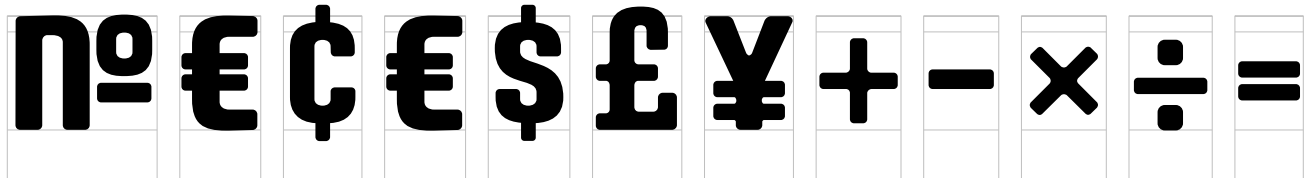
/ \ - - - _ () { } [] , „



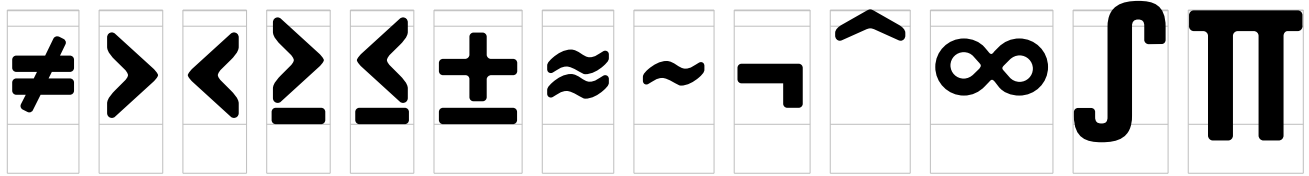
quotedbllef quotedblright quotel left quote right guillemotleft guillemotright guilsingl left guilsingl right quotedbl quot esing le florin uniF8FF at



ampersand paragraph section copyright registered trademark degree bar broken bar dagger daggerdbl uni2116



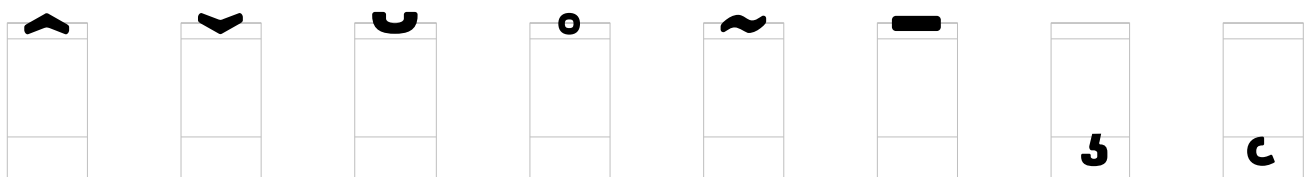
uni2116.ss01 Euro cent currency dollar sterling yen plus minus multiply divide equal



notequal greater less greater equal lessequal plusminus approx equal asciitilde logicalnot asciicircum infinity integral product



summation radical uni00B5 partialdiff percent perthousand lozenge dieresis dotaccent grave acute hungarumlaut



circumflex caron breve ring tilde macron cedilla ogonek

FONO WAS DESIGNED BY THOMAS METTENDORF.
PUBLISHED BY GARAGEFONTS LLC.