

DOTTED WEEKEND SPECIMEN

GARAGEFONTS.COM

# Dotted Weekend

---

ExtraLight

*ExtraLight Italic*

Light

*Light Italic*

Regular

*Italic*

**Bold**

***Bold Italic***

**ExtraBold**

***ExtraBold Italic***

**Black**

***Black Italic***

EXHIBITION

AMAZEMENT

QUARTERLY

EXORAMEND

THIRTIETH

FIREPROOF

EXHORTING

A1A2 ELEMENT

QUARTERLY

EXCHANGED

THIRTIETH

FIREPROOF

DOTTED

DISGRACES

SUPPORTED

WANTABLE

DESCRIBED

STRUSSUL

DOTTED WEEKEND SPECIMEN

DISGRACES

SUPPORTED

FANCIBLE

DESCRIBED

STRESSFUL

M i s d e e d s

P u r p l e s h

S i g n i n g s

B a n d e s

G i g g l i n g

S q u e a l e r

Missed seeds

Purple-ish

Signings

Banishes

Giggling

Squaller



Empty code set

Random set

Random set

Empty code set

Code name

Barryges

Excepted

Fanciest

Exploder

Piracies

CodeName

Barages

From the beginning of the systematic study of the heavens, the fact has been recognized that the form of the Milky Way denotes the scheme of the sidereal system. At first it was thought that the shape of the system was that of a vast round disk, flat like a cheese, and filled with stars, our sun and his relatively few neighbors being placed near the center. According to this view, the galactic belt was an effect of perspective; for when looking in the direction of the plane of the disk, the eye ranged through an immense extension of stars which blended into a glimmering blur, surrounding us like a ring; while when looking out from the sides of the disk we saw but few stars, and in those directions the heavens appeared relatively blank. Finally it was recognized that this theory did not correspond with the observed appearances, and it became evident that the Milky Way was not a mere effect of perspective, but an actual band of enormously distant stars, forming a circle about the sphere, the central opening of

From the beginning of the systematic study of the heavens, the fact has been recognized that the form of the Milky Way denotes the scheme of the sidereal system. At first it was thought that the shape of the system was that of a vast round disk, flat like a cheese, and filled with stars, our sun and his relatively few neighbors being placed near the center. According to this view, the galactic belt was an effect of perspective; for when looking in the direction of the plane of the disk, the eye ranged through an immense extension of stars which blended into a glimmering blur, surrounding us like a ring; while when looking out from the sides of the disk we saw but few stars, and in those directions the heavens appeared relatively blank. Finally it was recognized that this theory did not correspond with the observed appearances, and it became evident that the Milky Way was not a mere effect of perspective, but an actual band of enormously distant stars, forming a circle about the sphere, the central opening of

From the beginning of the systematic study of the heavens, the fact has been recognized that the form of the Milky Way denotes the scheme of the sidereal system. At first it was thought that the shape of the system was that of a vast round disk, flat like a cheese, and filled with stars, our sun and his relatively few neighbors being placed near the center. According to this view, the galactic belt was an effect of perspective; for when looking in the direction of the plane of the disk, the eye ranged through an immense extension of stars which blended into a glimmering blur, surrounding us like a ring; while when looking out from the sides of the disk we saw but few stars, and in those directions the heavens appeared relatively blank. Finally it was recognized that this theory did not correspond with the observed appearances, and it became evident that the Milky Way was not a mere effect of perspective, but an actual band of enormously distant stars, forming a circle about the sphere, the central opening of

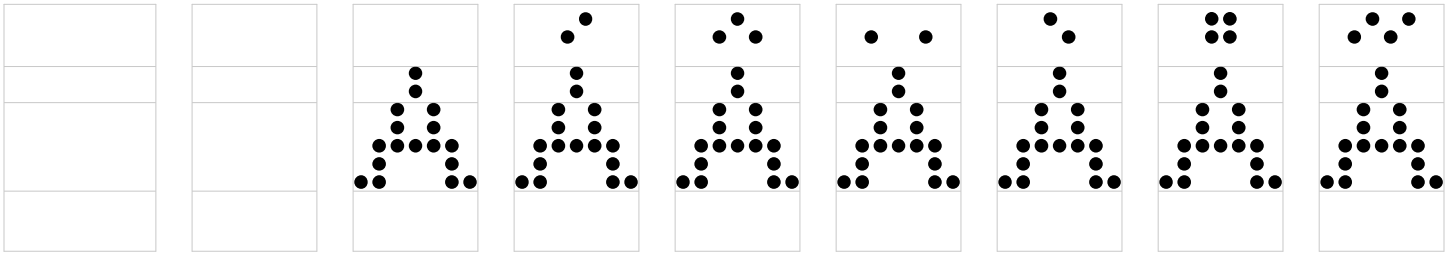
From the beginning of the systematic study of the heavens, the fact has been recognized that the form of the Milky Way denotes the scheme of the sidereal system. At first it was thought that the shape of the system was that of a vast round disk, flat like a cheese, and filled with stars, our sun and his relatively few neighbors being placed near the center. According to this view, the galactic belt was an effect of perspective; for when looking in the direction of the plane of the disk, the eye ranged through an immense extension of stars which blended into a glimmering blur, surrounding us like a ring; while when looking out from the sides of the disk we saw but few stars, and in those directions the heavens appeared relatively blank. Finally it was recognized that this theory did not correspond with the observed appearances, and it became evident that the Milky Way was not a mere effect of perspective, but an actual band of enormously distant stars, forming a circle about the sphere, the central opening of

From the beginning of the systematic study of the heavens, the fact has been recognized that the form of the Milky Way denotes the scheme of the sidereal system. At first it was thought that the shape of the system was that of a vast round disk, flat like a cheese, and filled with stars, our sun and his relatively few neighbors being placed near the center. According to this view, the galactic belt was an effect of perspective; for when looking in the direction of the plane of the disk, the eye ranged through an immense extension of stars which blended into a glimmering blur, surrounding us like a ring; while when looking out from the sides of the disk we saw but few stars, and in those directions the heavens appeared relatively blank. Finally it was recognized that this theory did not correspond with the observed appearances, and it became evident that the Milky Way was not a mere effect of perspective, but an actual band of enormously distant stars, forming a circle about the sphere, the central opening of

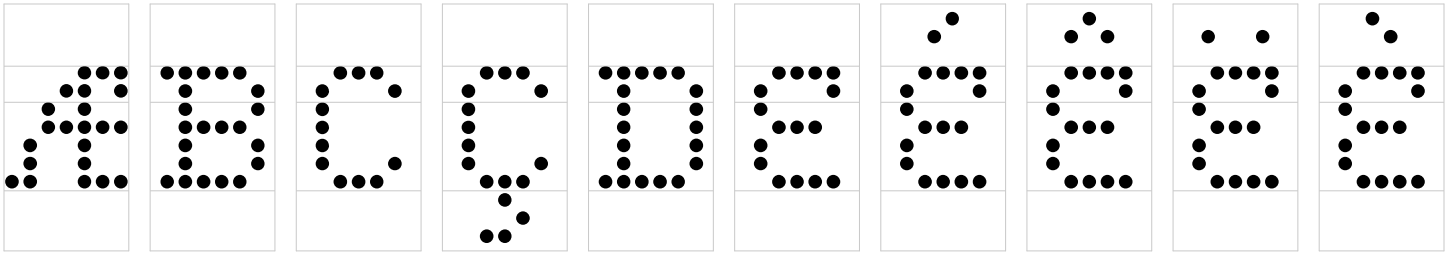
From the beginning of the systematic study of the heavens, the fact has been recognized that the form of the Milky Way denotes the scheme of the sidereal system. At first it was thought that the shape of the system was that of a vast round disk, flat like a cheese, and filled with stars, our sun and his relatively few neighbors being placed near the center. According to this view, the galactic belt was an effect of perspective; for when looking in the direction of the plane of the disk, the eye ranged through an immense extension of stars which blended into a glimmering blur, surrounding us like a ring; while when looking out from the sides of the disk we saw but few stars, and in those directions the heavens appeared relatively blank. Finally it was recognized that this theory did not correspond with the observed appearances, and it became evident that the Milky Way was not a mere effect of perspective, but an actual band of enormously distant stars, forming a circle about the sphere, the central opening of



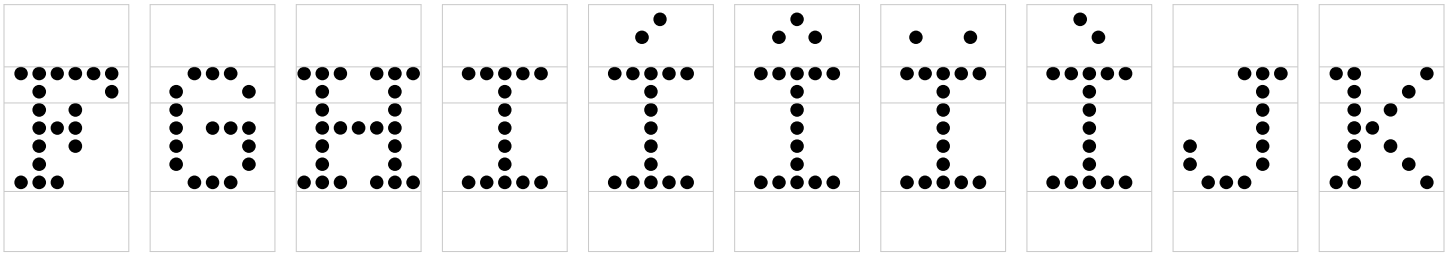
72pt



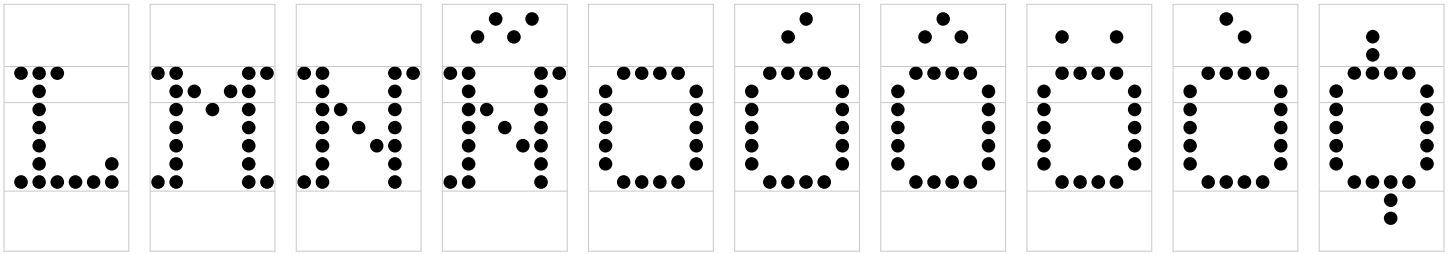
.notdef    space    A    Aacute    Acircumflex    Adieresis    Agrave    Aring    Atilde



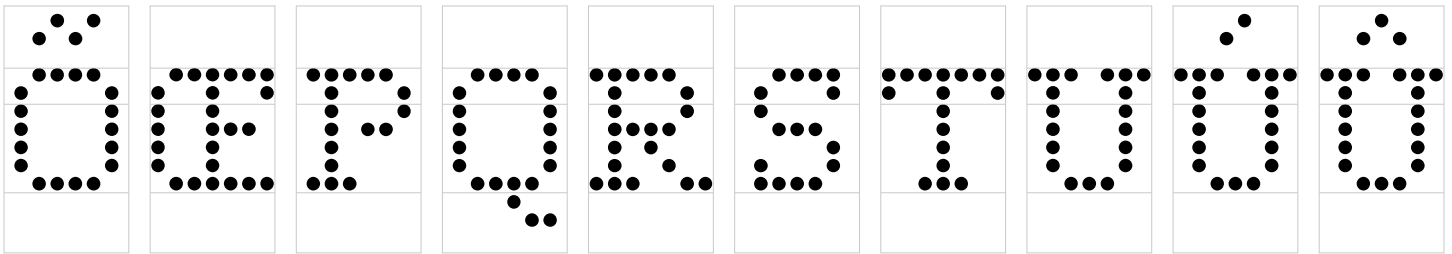
AE    B    C    Ccedilla    D    E    Eacute    Ecircumflex    Edieresis    Egrave



F    G    H    I    Iacute    Icircumflex    Idieresis    Igrave    J    K

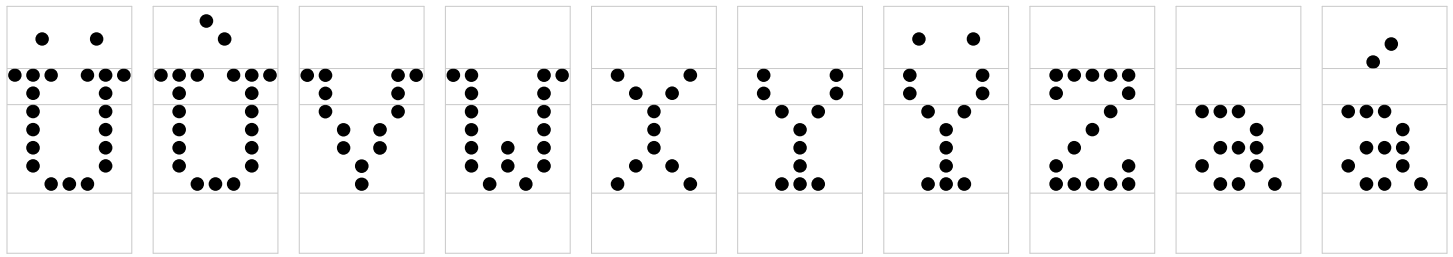


L    M    N    Ntilde    O    Oacute    Ocircumflex    Odieresis    Ograve    Oslash

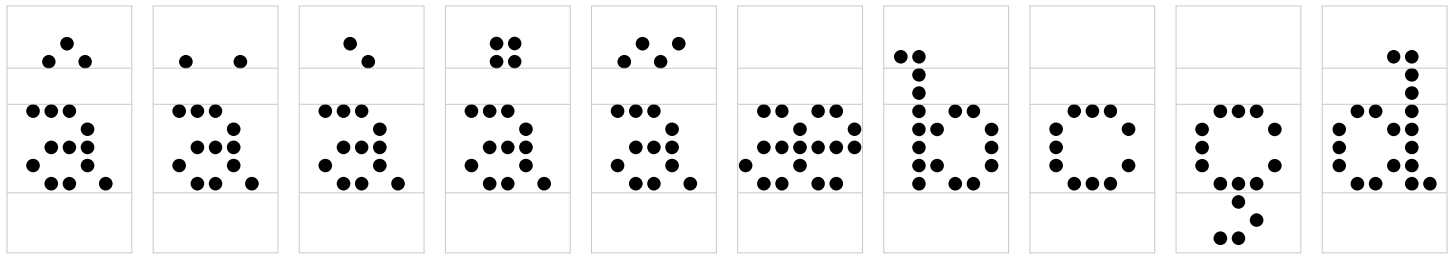


Otilde    OE    P    Q    R    S    T    U    Uacute    Ucircumflex

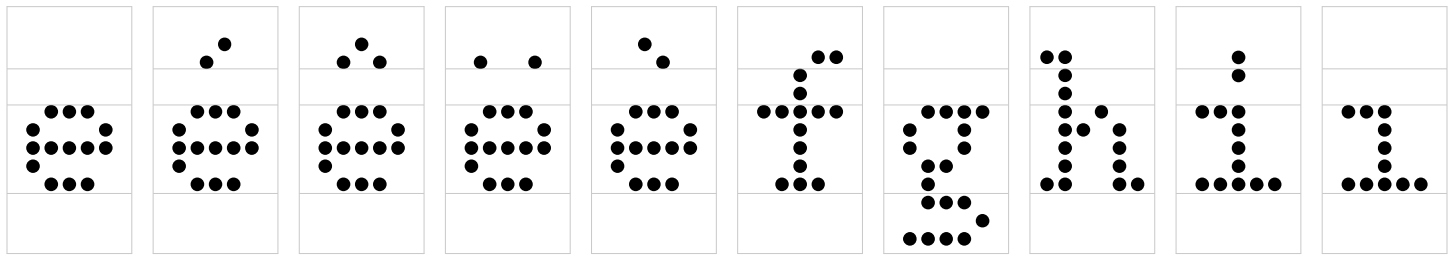
72pt



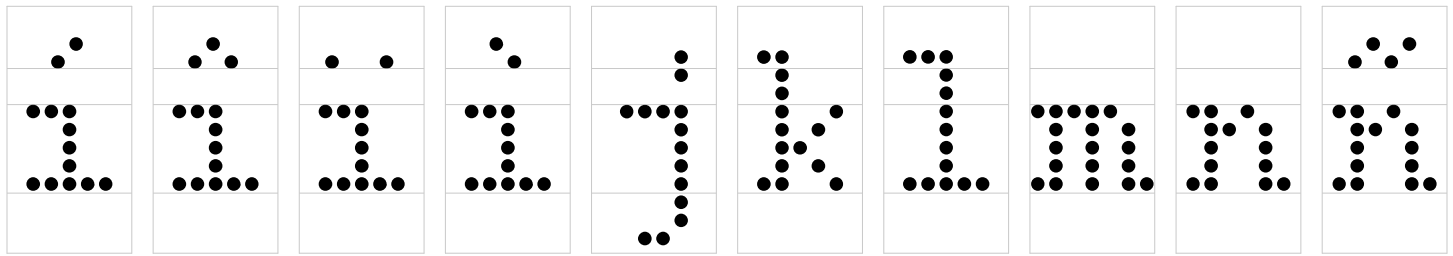
Udieresis Ugrave V W X Y Ydieresis Z a aacute



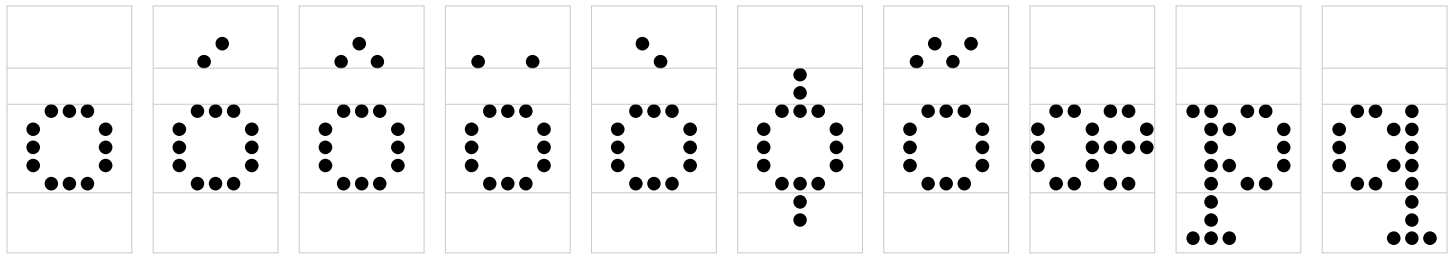
acircumflex adieresis agrave aring atilde ae b c ccedilla d



e eacute ecircumflex edieresis egrave f g h i dotlessi

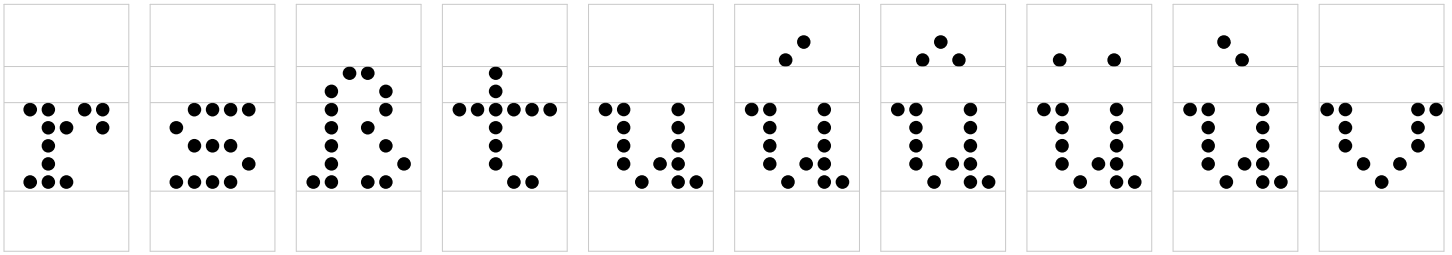


iacute icircumflex idieresis igrave j k l m n ntilde

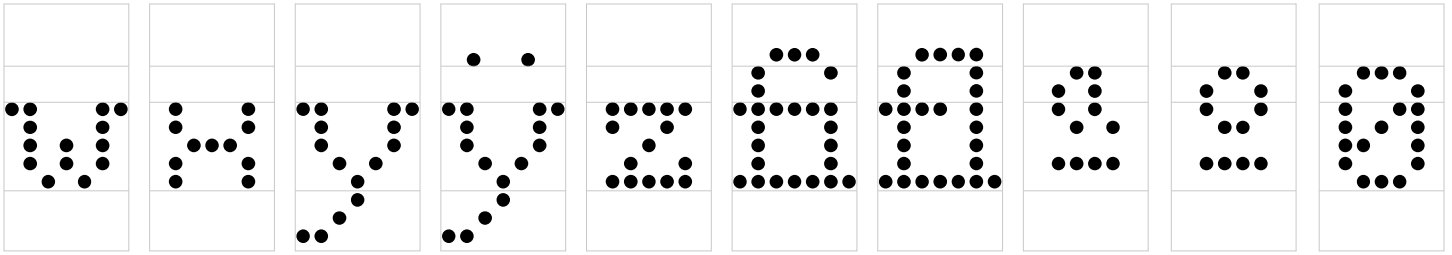


o oacute ocircumflex odieresis ograve oslash otilde oe p q

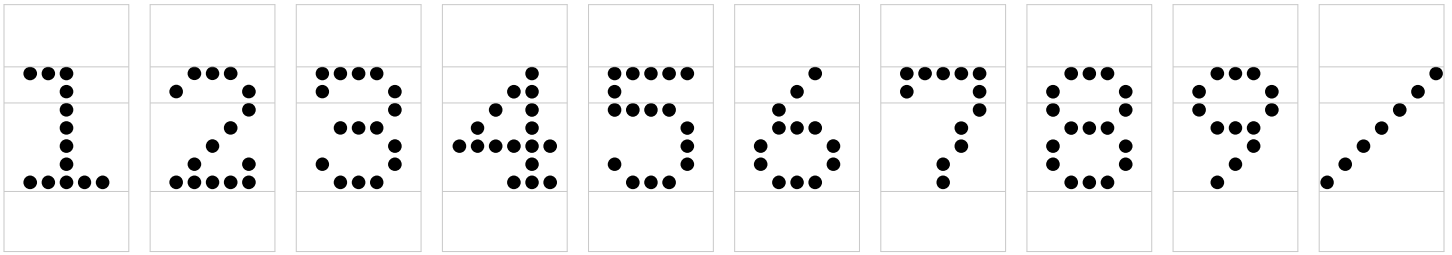
72pt



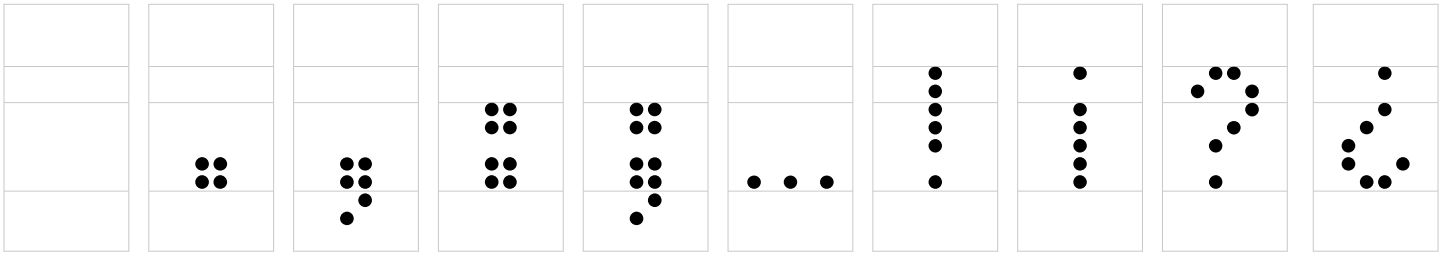
r s germandbls t u uacute ucircumflex udieresis ugrave v



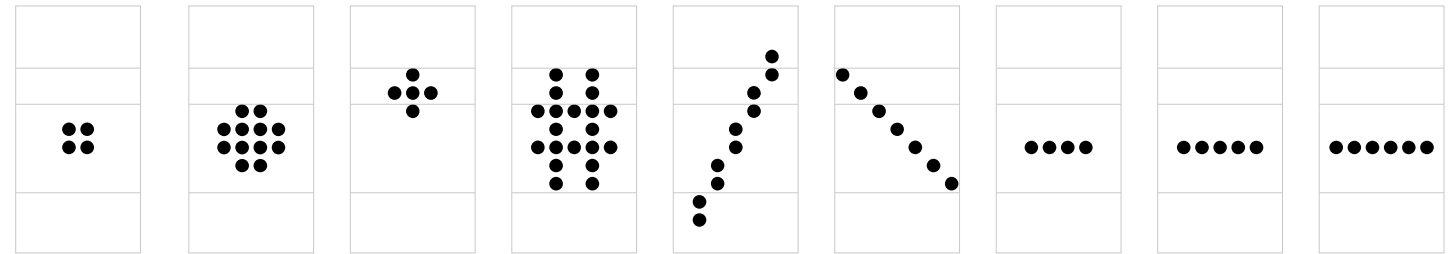
w x y ydieresis z fi fl ordfeminine ordmasculine zero



one two three four five six seven eight nine fraction



uni00A0 period comma colon semicolon ellipsis exclam exclamdown question questiondown



periodcentered bullet asterisk numbersign slash backslash hyphen endash emdash

72pt

underscore	parenleft	parenright	braceleft	braceright	bracketleft	bracketright	quotesinglbase	quotedblbase

quotedblleft	quotedblright	quoteleft	quoteright	guillemotleft	guillemotright	guilsingleft	guilsingright	quotedbl

quotesingle	florin	uniF8FF	at	ampersand	paragraph	section	copyright	registered	trademark

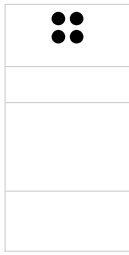
degree	bar	dagger	daggerdbl	cent	currency	dollar	Euro	sterling	yen

plus	equal	greater	less	asciitilde	logicalnot	asciicircum	integral	percent	perthousand

72pt



dieresis



dotaccent



grave



acute



hungarumlaut



circumflex



caron



breve



ring



tilde



macron



cedilla



ogonek

DOTTED WEEKEND WAS DESIGNED BY PIETER VAN ROSMALEN.  
PUBLISHED BY GARAGEFONTS LLC.